

USER AND SERVICE MANUAL

PETH-20

- Universal Power Supply
- Linear regulated
- Low Noise
- Designed for Laboratory use

+/- 15 V, 600 mA

Release 1.0
24 th of March 2007



อ. ช้างเผือก

Safety Warnings

As your precious time is not spoiled we note here only the *must-know-details*
Take time to read at least this one !

- This device is cooled by convection. If you install it in a cabinet make sure air circulation is sufficient.
- This device is operated with 230V. Make sure all three lines are properly connected.
- Replace fuse only with same type.
- If it may seem that normal operation is not occurring you must disconnect the Power Supply from Mains.



YOU WERE WARNED !

Congratulations !

It was a wise choice to use a **PETH** Power Supply because of it's outstanding superiour performance.

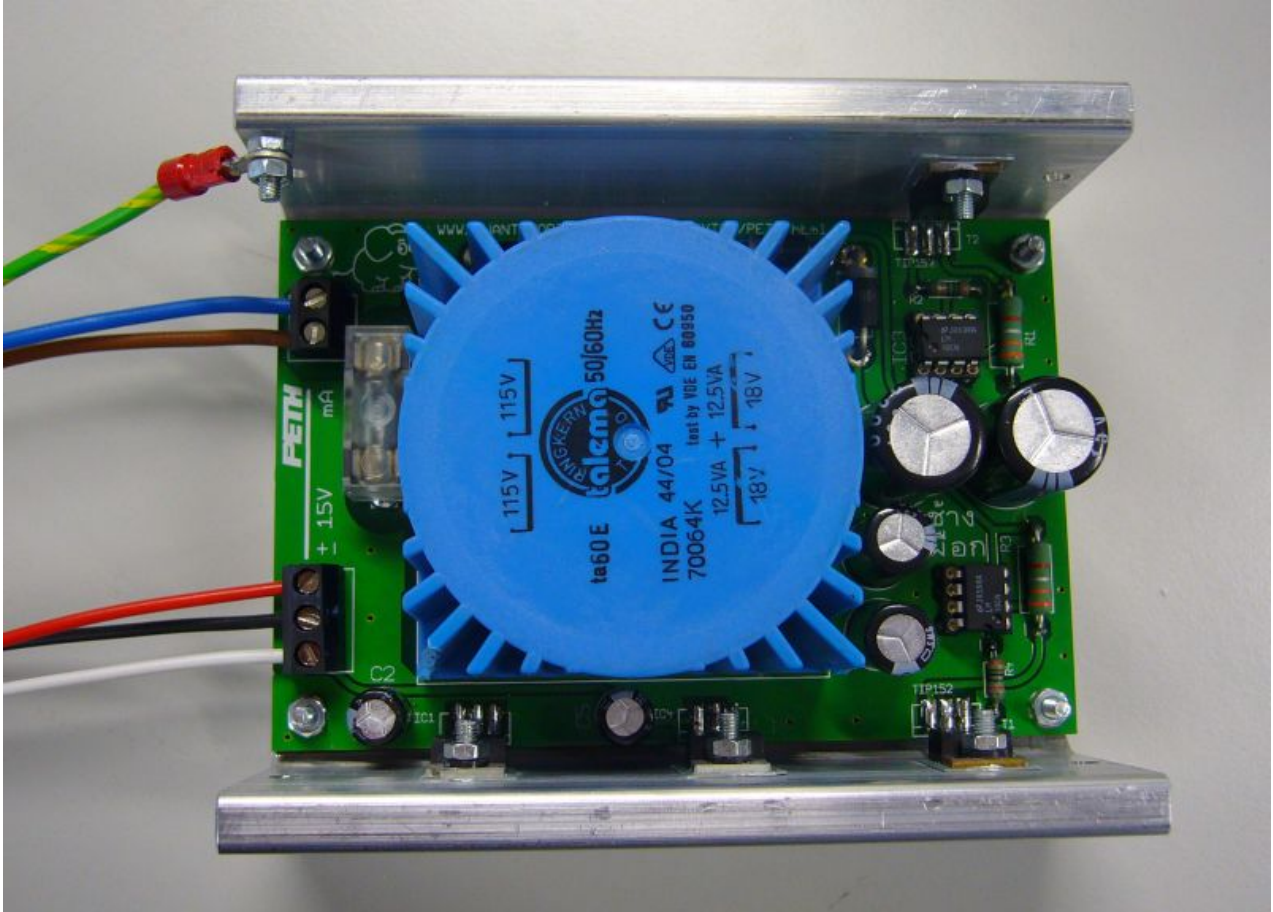
The Name **PETH** is a combination of Pet and ETH.

© ETH QUANTUMOPTICS 2007

This devices are built and tested by ELL.



CONNECTIONS :



From top to bottom :

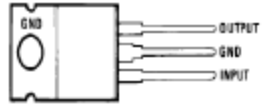
INPUT SECTION

The ground wire / protective earth (yellow – green) has to be connected with the case.
The neutral line follows (blue)
The phase wire (brown)

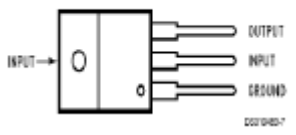
OUTPUT SECTION

+15 V (red)
GND (black) This one is connected to the case.
-15 V (white)

TO-220 Power Package (T)

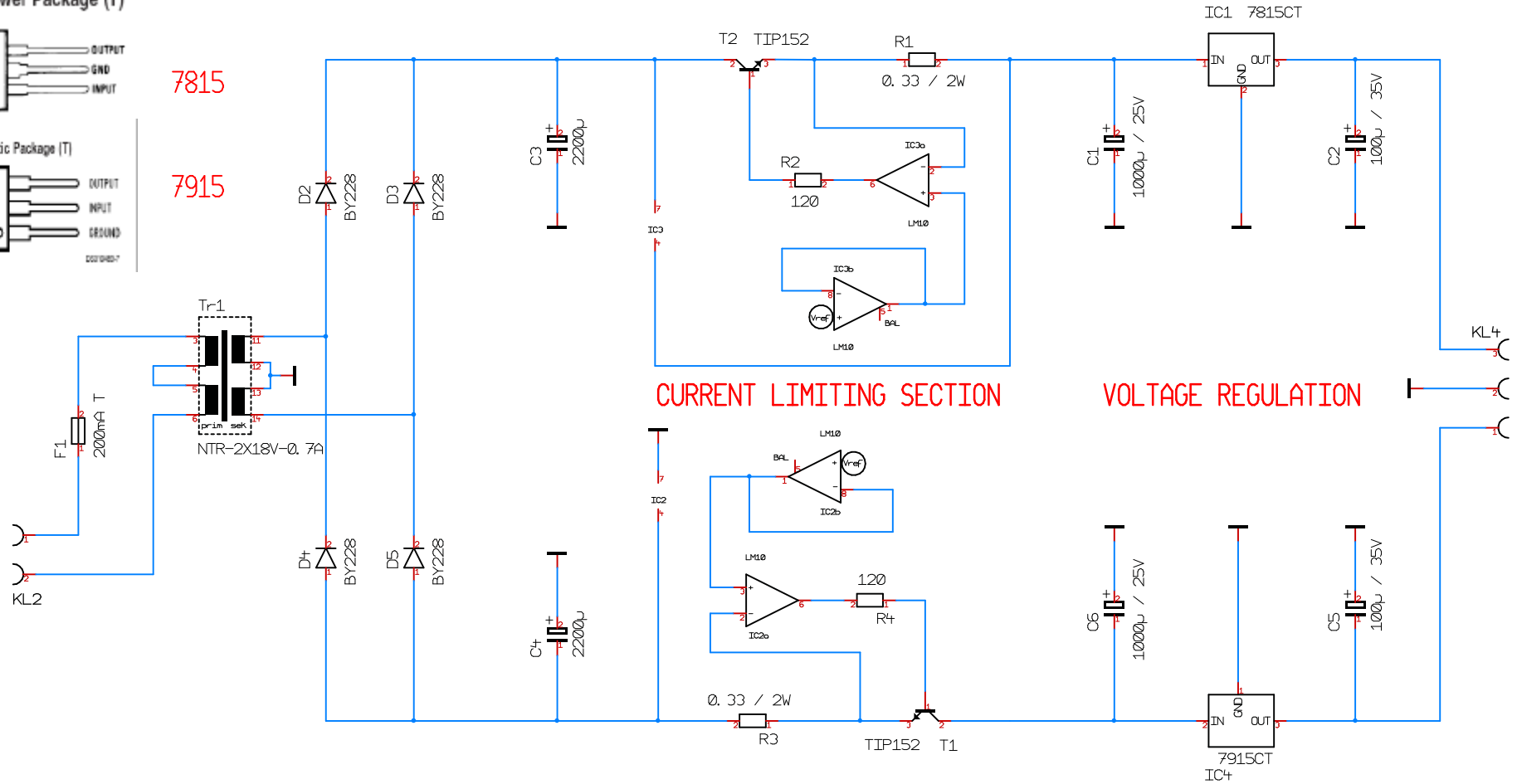


TO-220 Plastic Package (T)



7815

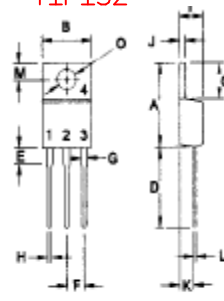
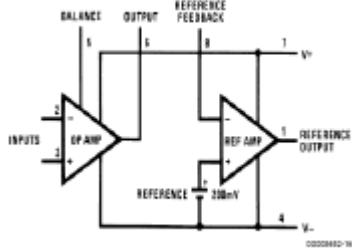
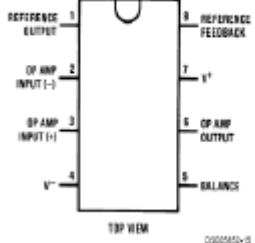
7915



LM10

TIP152

Dual-In-Line Package (N)



PIN 1.BASE
2.COLLECTOR
3.EMITTER
4.COLLECTOR(CASE)



PROJECT : PETH - 20	
FUNC: POWER SUPPLY	
DATE: 12 MAI 2007	PAGE: 1

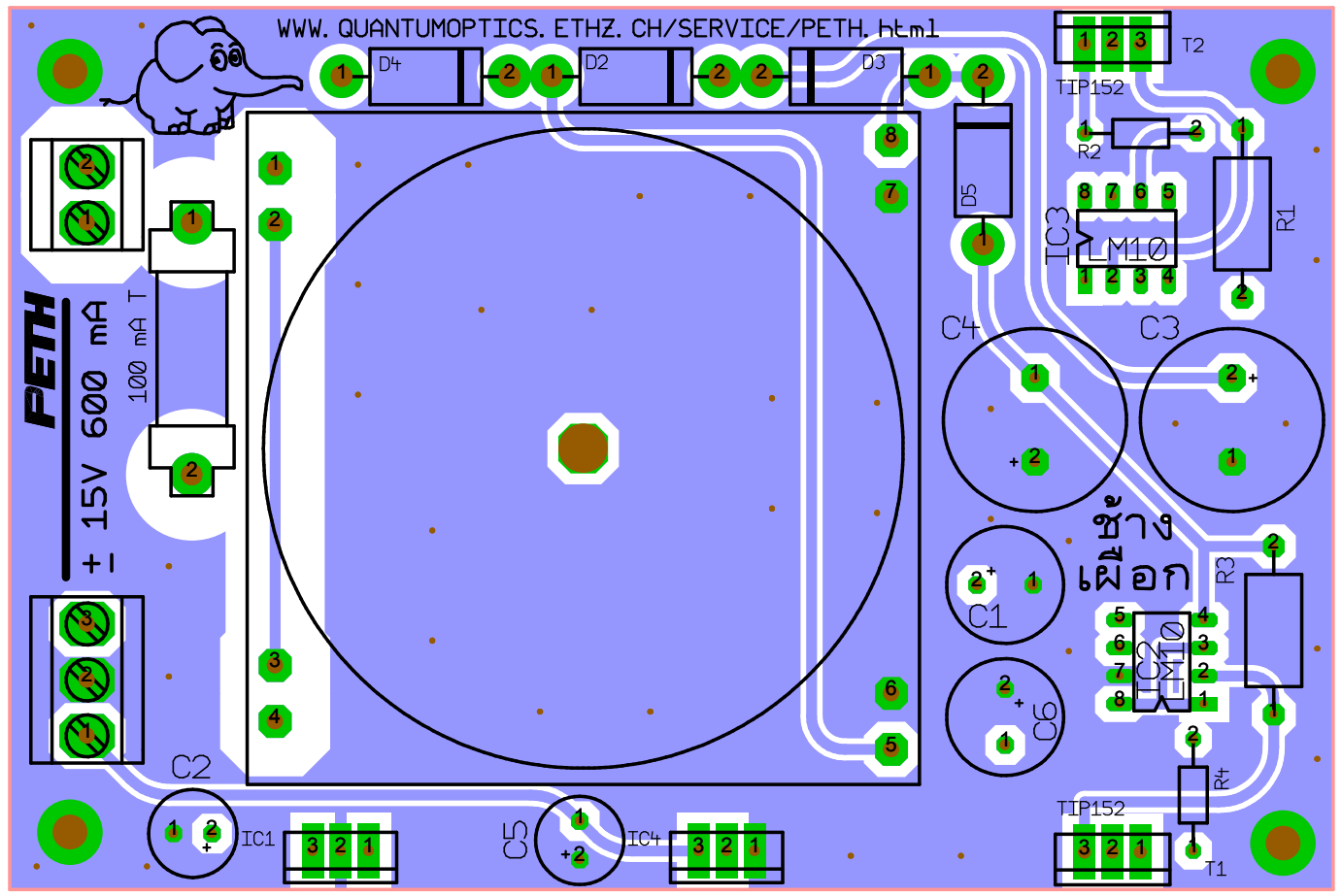
ETH QUANTUMOPTICS

Alexander C. Frank, HPF-D16, 8093 Zürich



PETH

+ 15V 600 mA
100 mA T



แผง
ไดโอด

TIP152

TIP152

TIP152

LM10

LM10

LM10

LM10

1 2 3

1 2 3

1 2 3

1 2 3

1 2 3

1 2 3

1 2 3

1 2 3

1 2 3

1 2 3

1 2 3

1 2 3

1 2 3

1 2 3

1 2 3

1 2 3

1 2 3

1 2 3

1 2 3

1 2 3

1 2 3

1 2 3

1 2 3

1 2 3

Pos	Name	Wert	Gehäuse
1	C1	1000 μ / 25V	ELKO5-10.5
2	C2	100 μ / 35V	ELKO3.5-8
3	C3	2200 μ	ELKO7.5-16.5
4	C4	2200 μ	ELKO7.5-16.5
5	C5	100 μ / 35V	ELKO3.5-8
6	C6	1000 μ / 25V	ELKO5-10.5
7	D2	BY228	D6
8	D3	BY228	D6
9	D4	BY228	D6
10	D5	BY228	D6
11	F1	200mA T	FUSE 5x20
12	IC1	7815CT	TO-220ST
13	IC2	LM10	DIL8
14	IC3	LM10	DIL8
15	IC4	7915CT	TO-220ST
16	KL2	KLEMME 2POL	KLEMME 2
17	KL4	KLEMME 3POL	KLEMME 3
18	R1	0.33 / 2W	R6
19	R2	120	R4
20	R3	0.33 / 2W	R6
21	R4	120	R4
22	T1	TIP152	TO220
23	T2	TIP152	TO220
24	Tr1	NTR-2X18V-0.7A	T-RING25VA