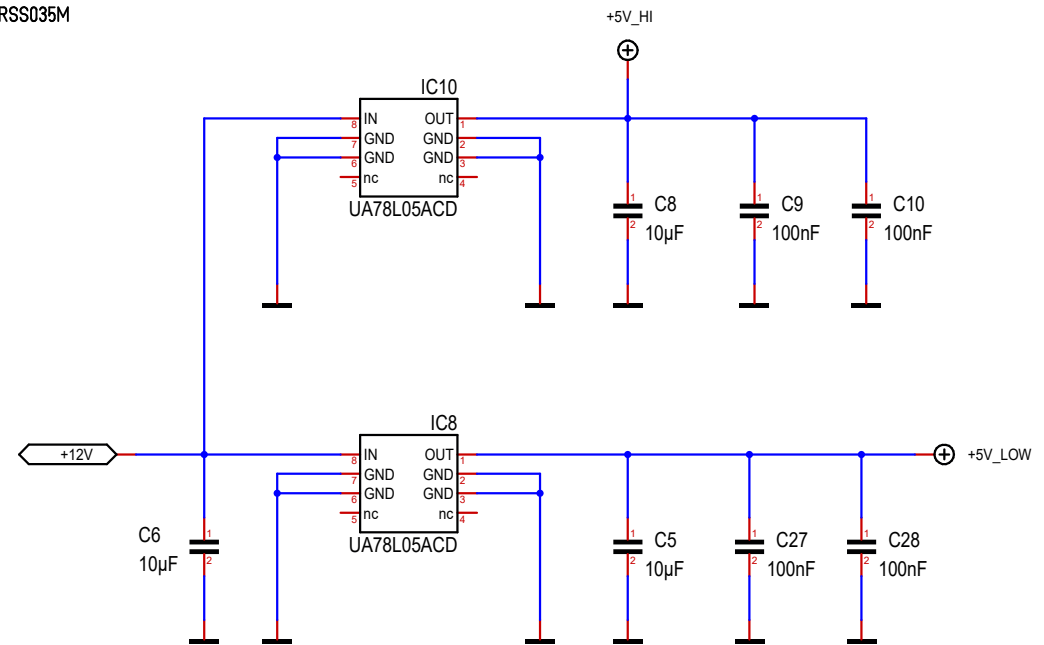
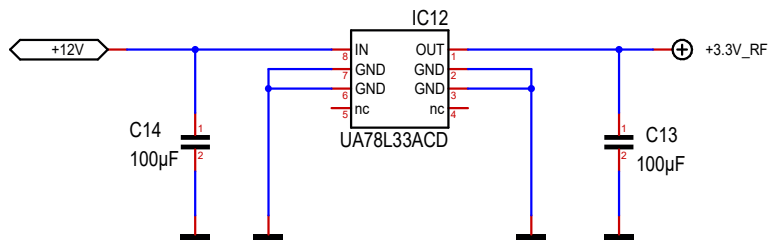
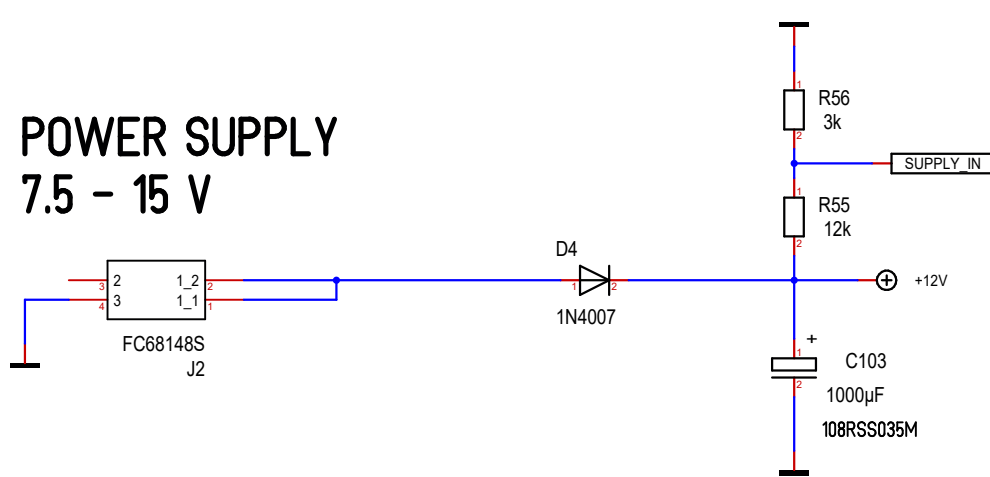
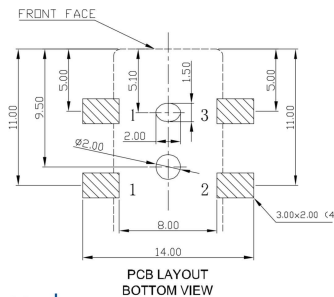
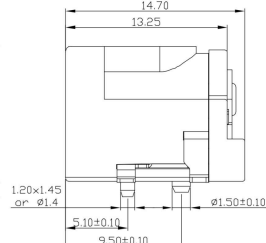
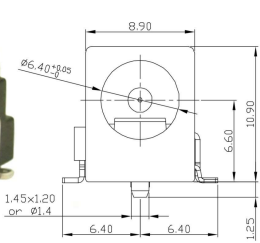
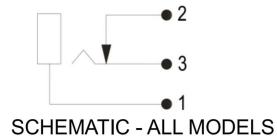


POWER SUPPLY 7.5 - 15 V



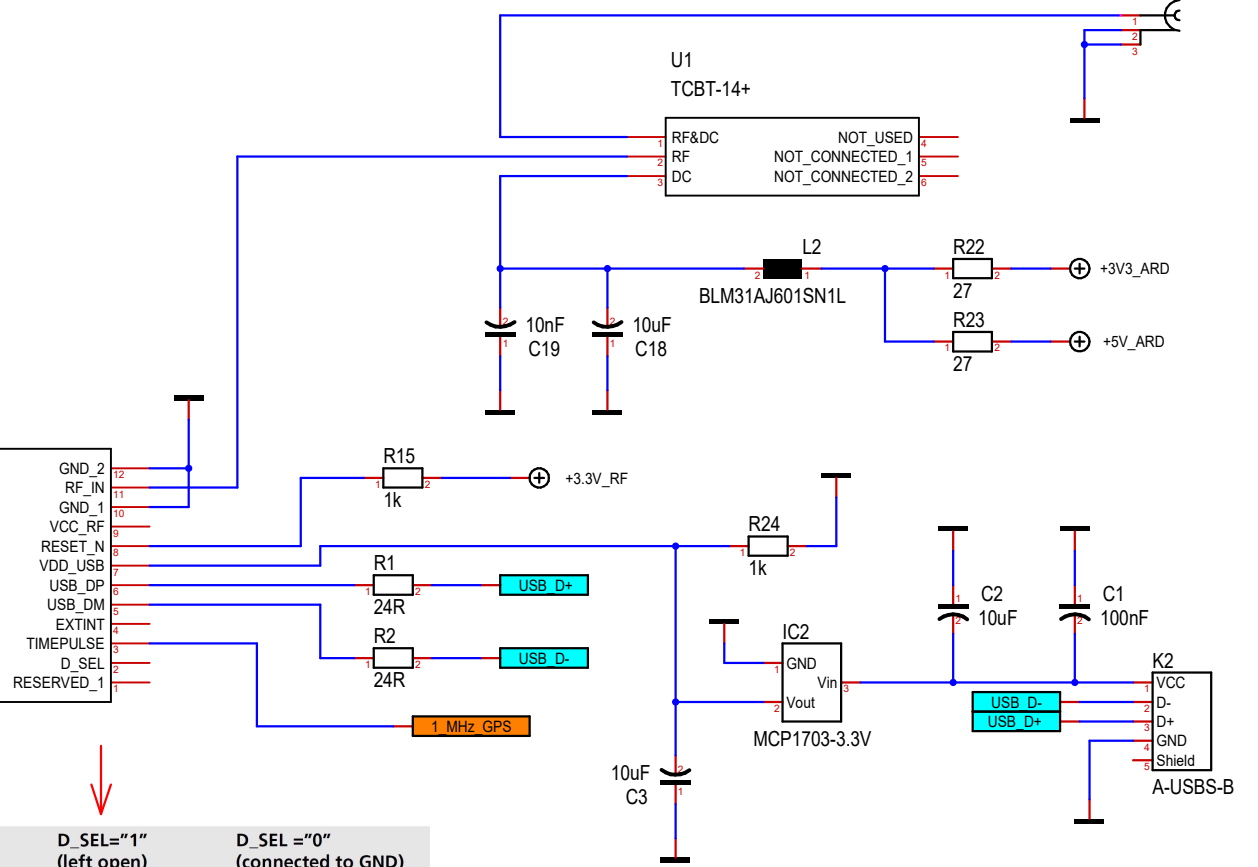
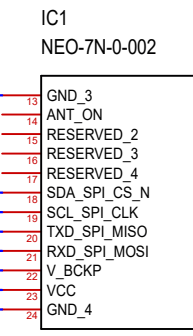
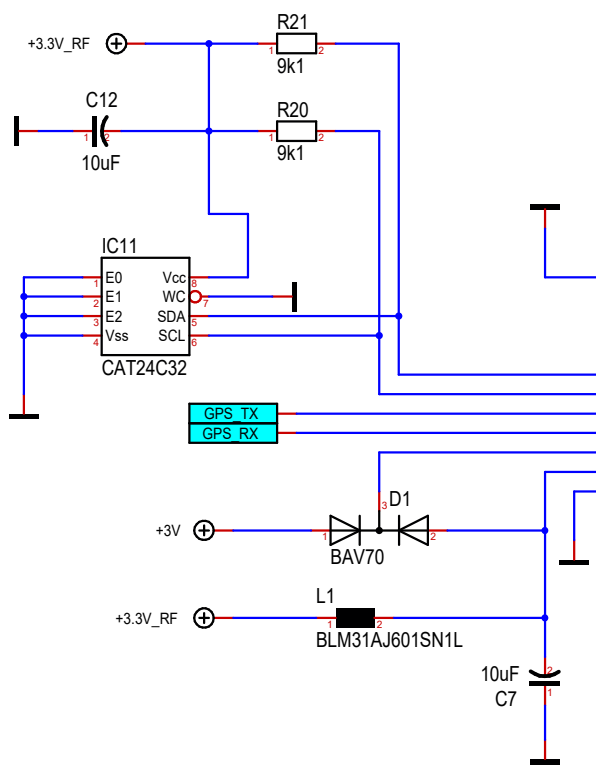
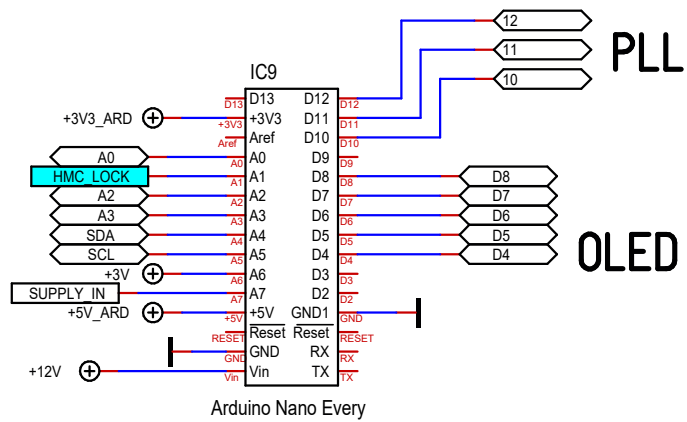
DC-10AS 2.1mm Pin
DC-10BS 2.5mm Pin

Part No. FC68148S
Part No. FC68149S
Add Suffix 'T' for taped.



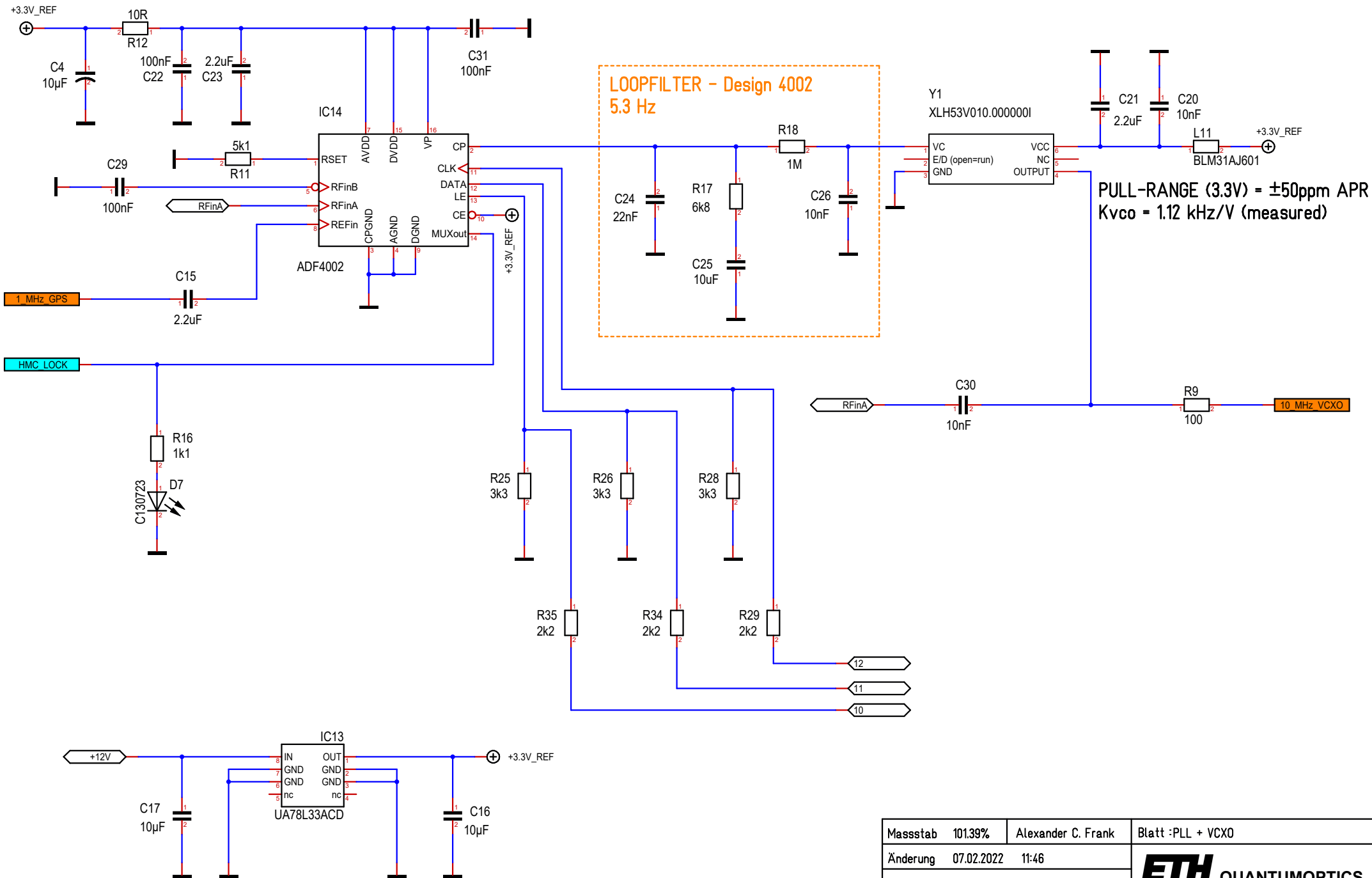
For further information, contact sales@cliffuk.co.uk

Massstab	101.39%	Alexander C. Frank	Blatt : Power Inlet
Änderung	07.02.2022	11:46	ETH QUANTUMOPTICS
Ausgabe	07.02.2022	11:47	
Datei	Daramod-2.T3001		

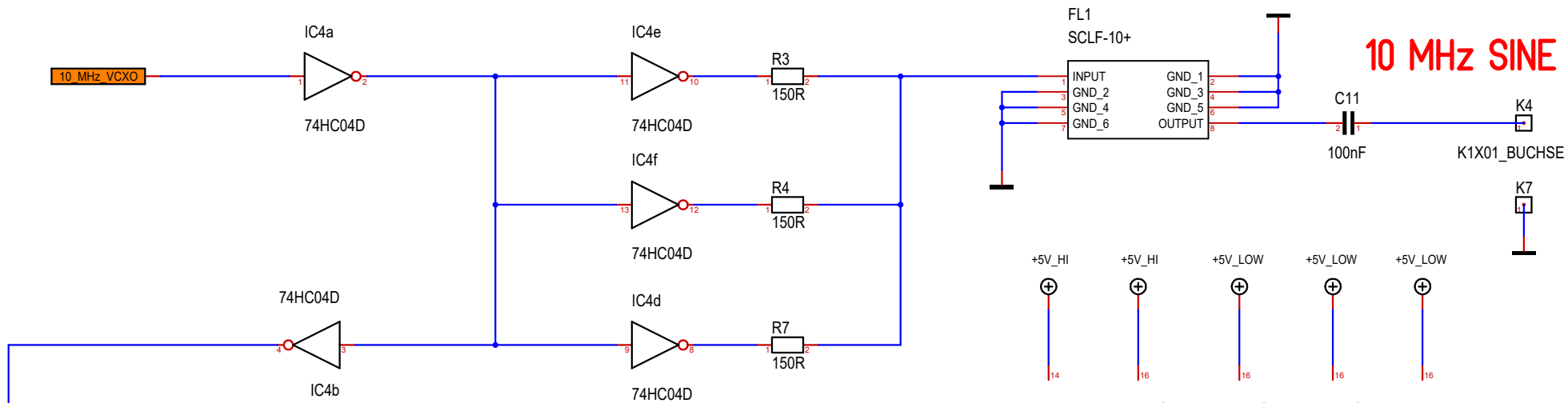


PIN #	D_SEL="1" (left open)	D_SEL="0" (connected to GND)
20	UART TX	SPI MISO
21	UART RX	SPI MOSI
19	DDC SCL	SPI CLK
18	DDC SDA	SPI CS_N

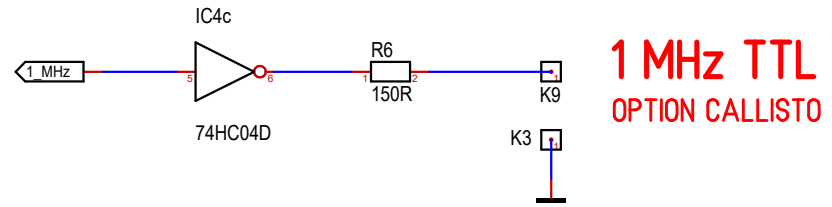
Table 6: Data interface selection by D_SEL



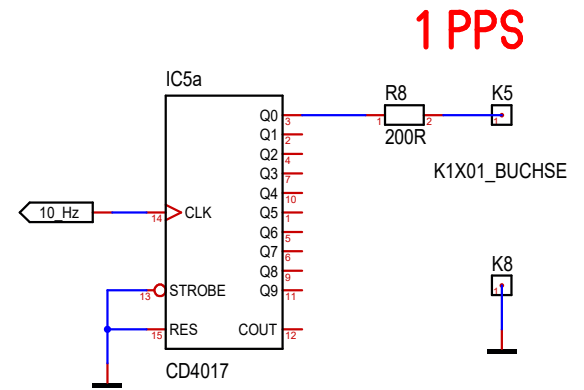
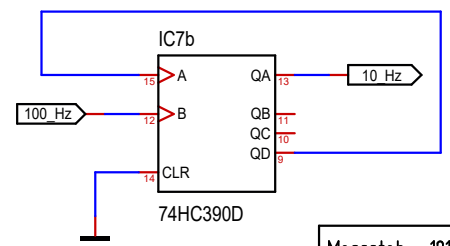
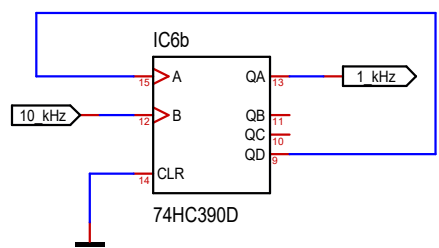
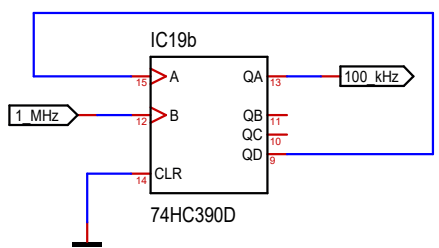
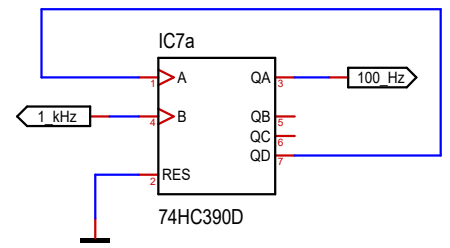
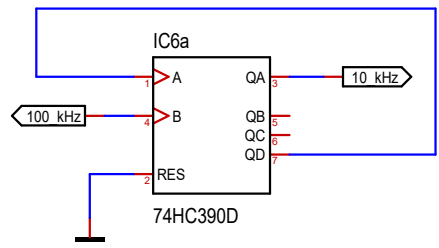
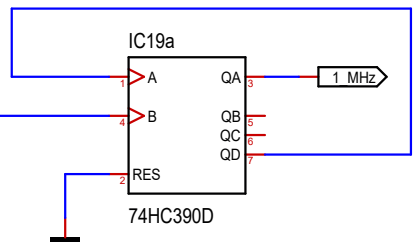
Massstab	101.39%	Alexander C. Frank	Blatt :PLL + VCXO
Änderung	07.02.2022 11:46	ETH QUANTUMOPTICS	
Ausgabe	07.02.2022 11:47		
Datei	Daramod-2.T3001		



10 MHz SINE

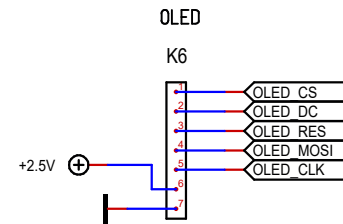
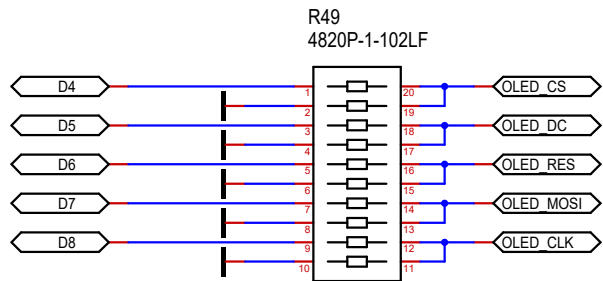
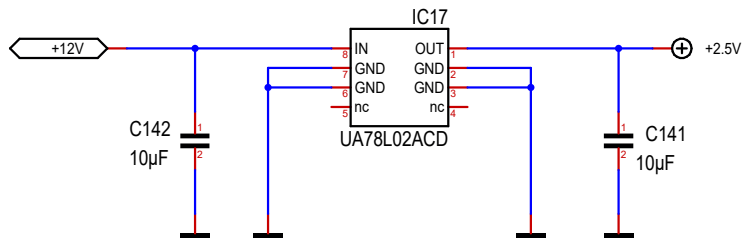


1 MHz TTL
OPTION CALLISTO



1 PPS

Massstab	101.39%	Alexander C. Frank	Blatt :Divider
Änderung	07.02.2022	11:46	ETH QUANTUMOPTICS
Ausgabe	07.02.2022	11:47	
Datei	Daramod-2.T3001		



Massstab	101.39%	Alexander C. Frank	Blatt :OLED Display
Änderung	07.02.2022	11:46	ETH QUANTUMOPTICS
Ausgabe	07.02.2022	11:47	
Datei	Daramod-2.T3001		