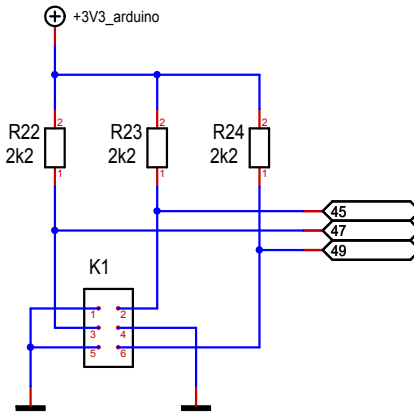
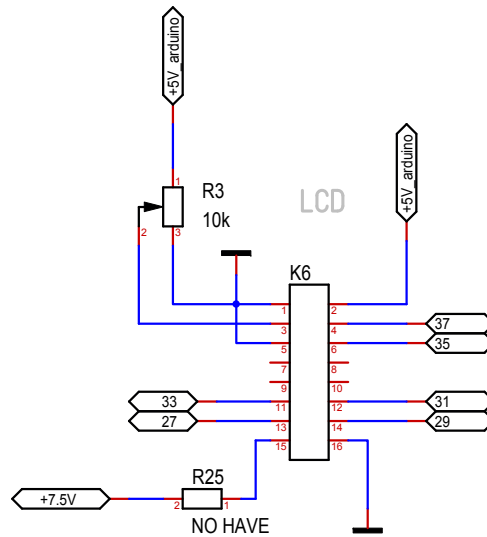
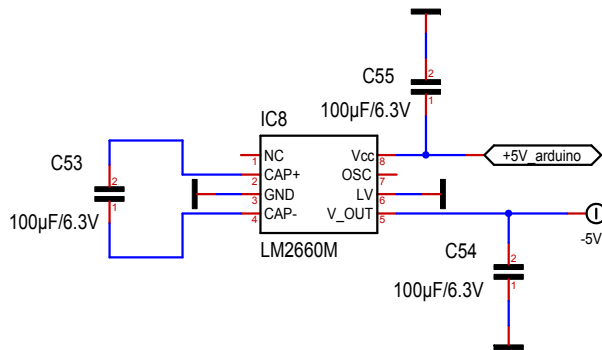
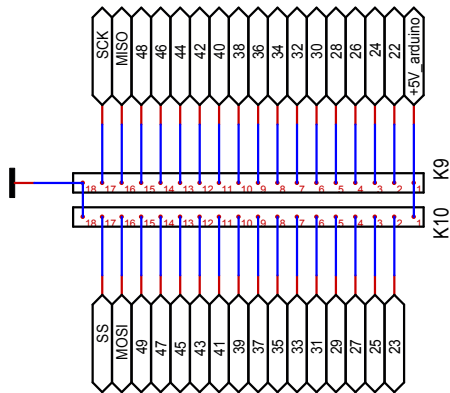


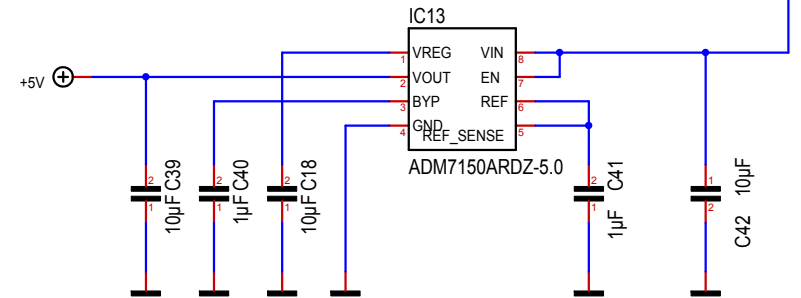
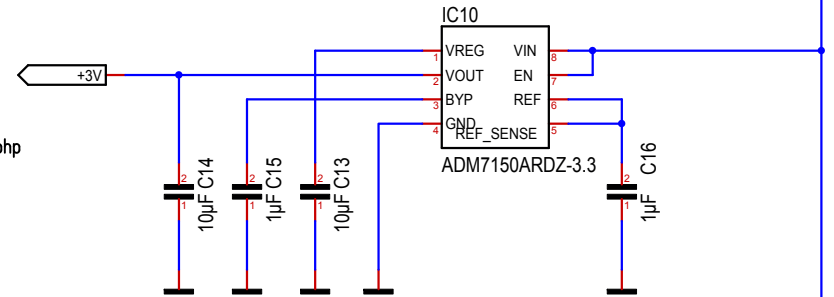
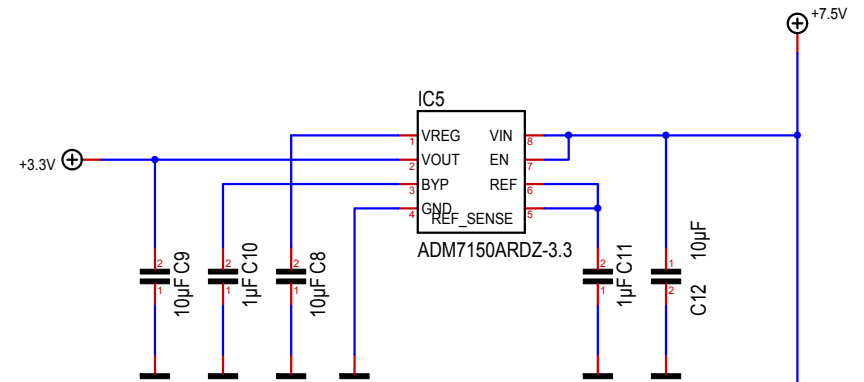
KEYBOARD



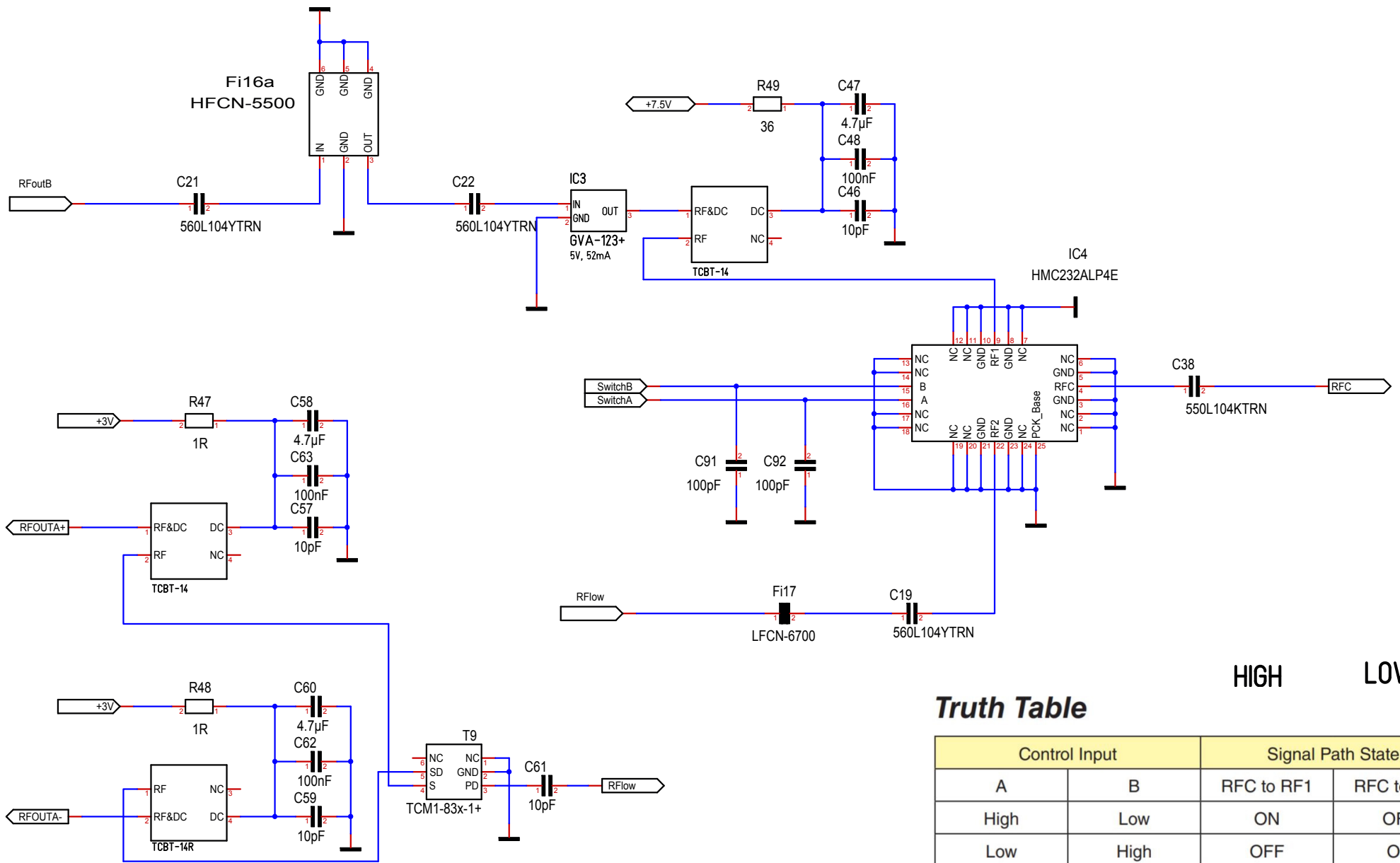
ROTARY ENCODER WITH SWITCH
 MAYBE THIS ONE :
<http://www.changpuak.ch/electronics/ROTARY-ENCODER.php>



MC41605B6W-SPTLY
 LiquidCrystal lcd(7,6,2,5,3,A0);
 LED: Pin 15,16



Massstab	101.39%	Mirco	Blatt : Arduino DUE
Änderung	20.06.2019	13:15	ETH QUANTUMOPTICS
Ausgabe	20.06.2019	13:20	
Datei	ADF5355-Mirco3.8.T3001		



HIGH LOW

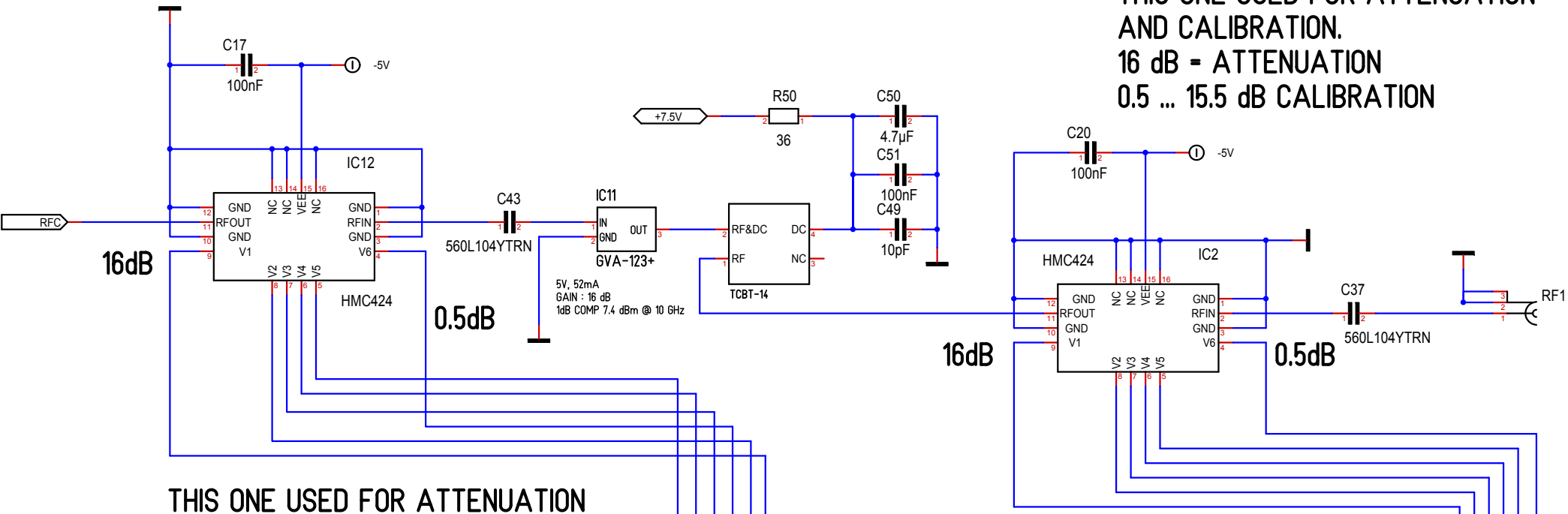
Truth Table

Control Input		Signal Path State	
A	B	RFC to RF1	RFC to RF2
High	Low	ON	OFF
Low	High	OFF	ON

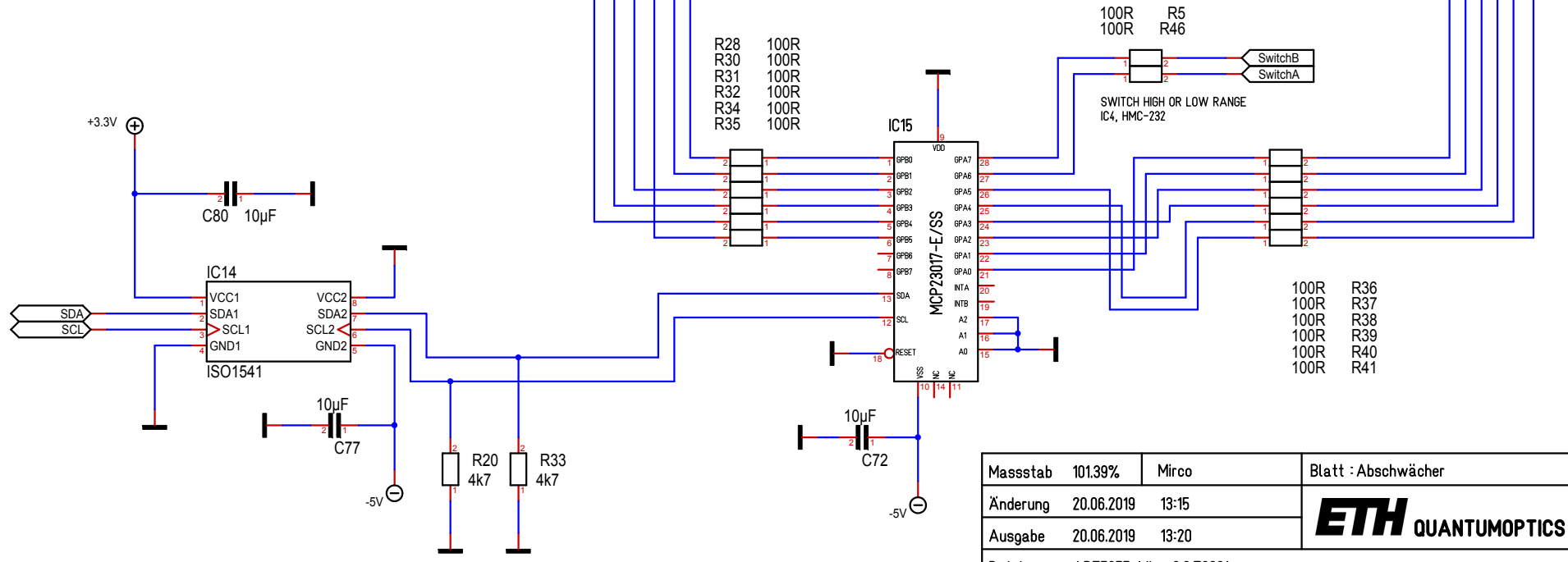
Caution: Do not "Hot Switch" power levels greater than +27 dBm (Vctl = 0/-5 Vdc).

Massstab	101.39%	Mirco	Blatt : RFswitch
Änderung	20.06.2019	13:15	ETH QUANTUMOPTICS
Ausgabe	20.06.2019	13:20	
Datei	ADF5355-Mirco3.8.T3001		

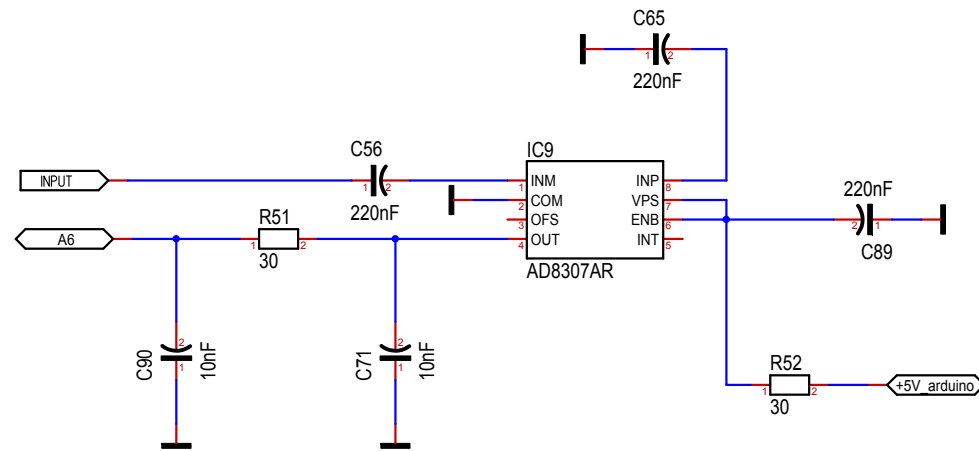
THIS ONE USED FOR ATTENUATION
AND CALIBRATION.
16 dB = ATTENUATION
0.5 ... 15.5 dB CALIBRATION



THIS ONE USED FOR ATTENUATION



Massstab	101.39%	Mirco	Blatt : Abschwächer
Änderung	20.06.2019	13:15	ETH QUANTUMOPTICS
Ausgabe	20.06.2019	13:20	
Datei	ADF5355-Mirco3.8.T3001		



CHECKS THE 10 MHz LEVEL

Massstab	101.39%	Alexander C. Frank	Blatt : AD8307
Änderung	20.06.2019	13:15	ETH QUANTUMOPTICS
Ausgabe	20.06.2019	13:20	
Datei	ADF5355-Mirco3.8.T3001		