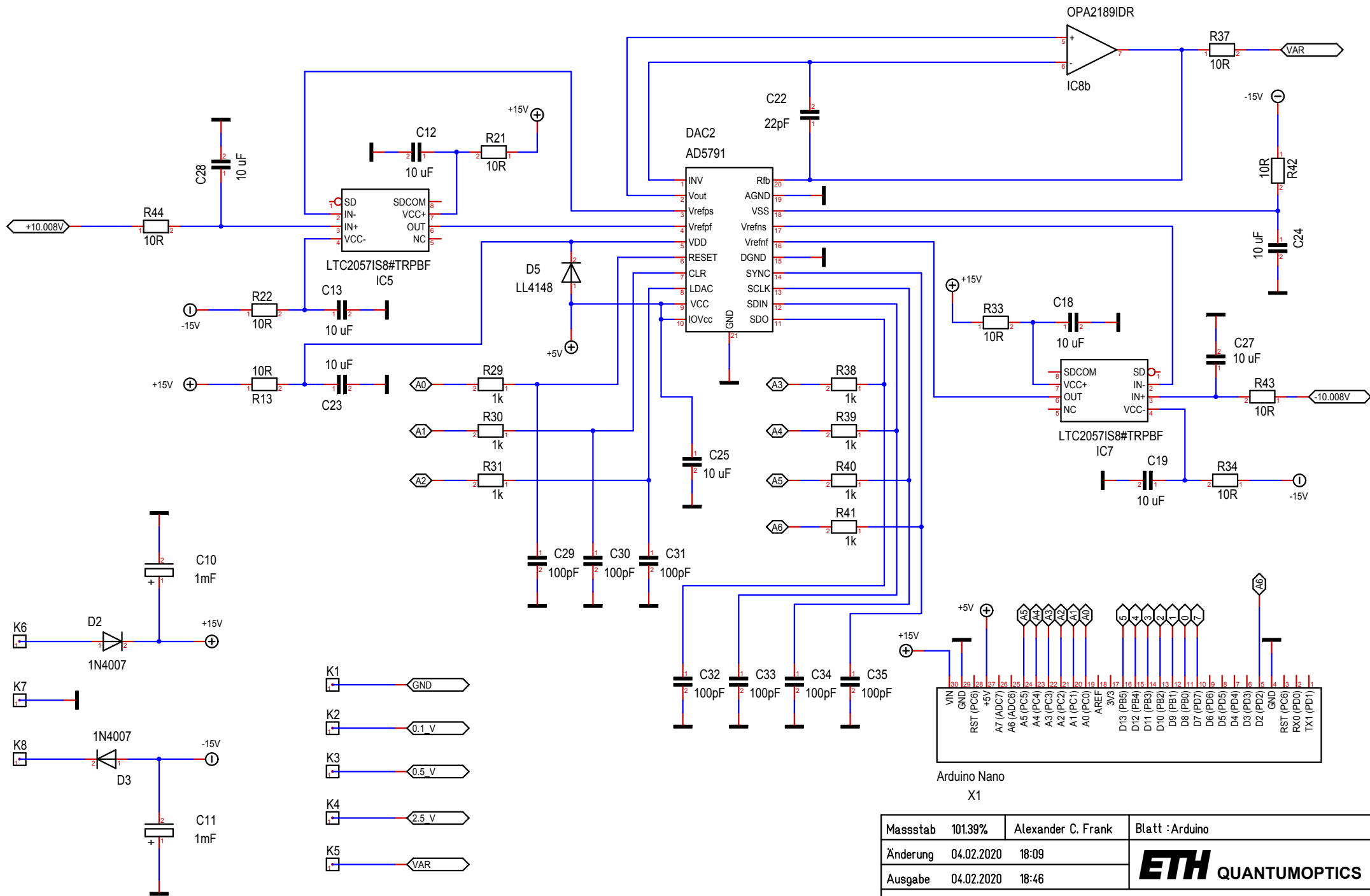
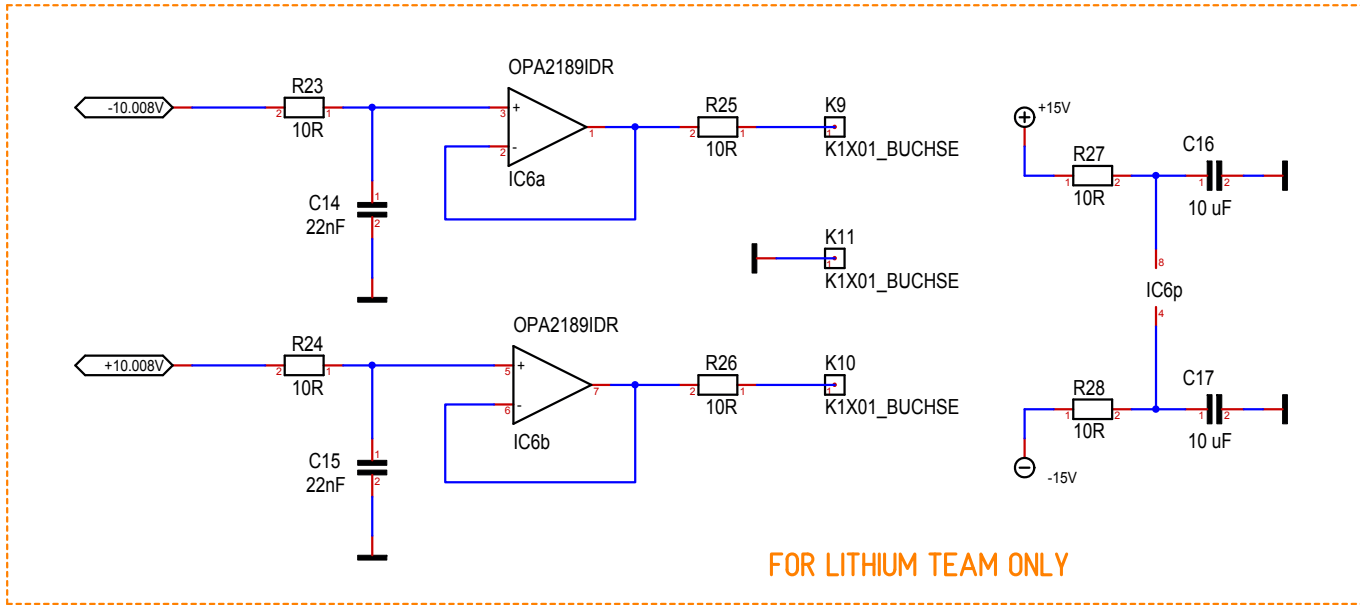
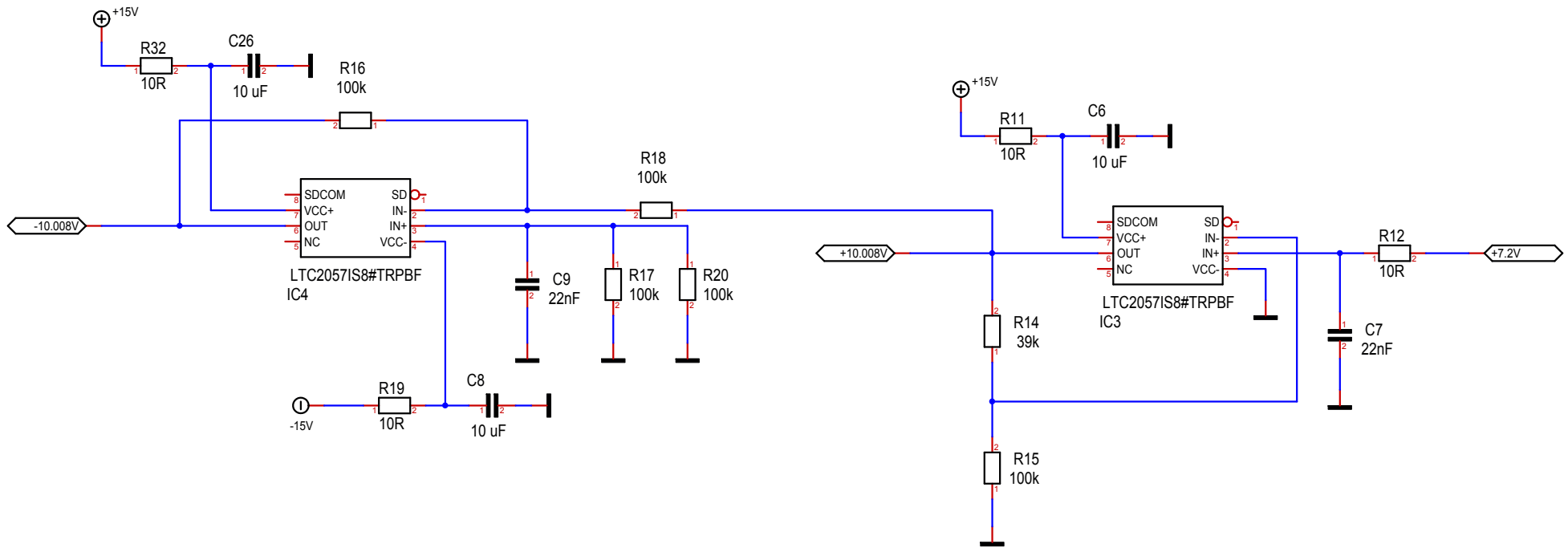


H8 PACKAGE
 TO-5 METAL CAN
 $T_{JMAX} = 150^{\circ}C$,
 LTZ1000CH: $\theta_{JA} = 80^{\circ}C/W$
 LTZ1000ACH: $\theta_{JA} = 400^{\circ}C/W$

Massstab	101.39%	Alexander C. Frank	Blatt :LTZ1000ACH
Änderung	04.02.2020	18:09	ETH QUANTUMOPTICS
Ausgabe	04.02.2020	18:46	
Datei	ReferenceMod.T3001		

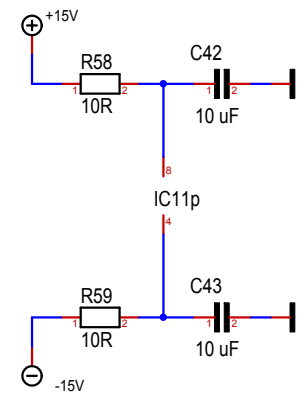
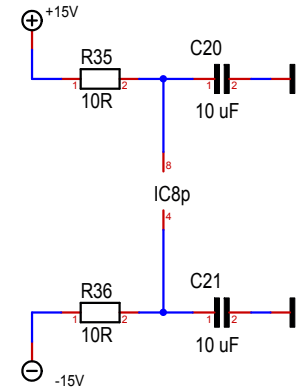
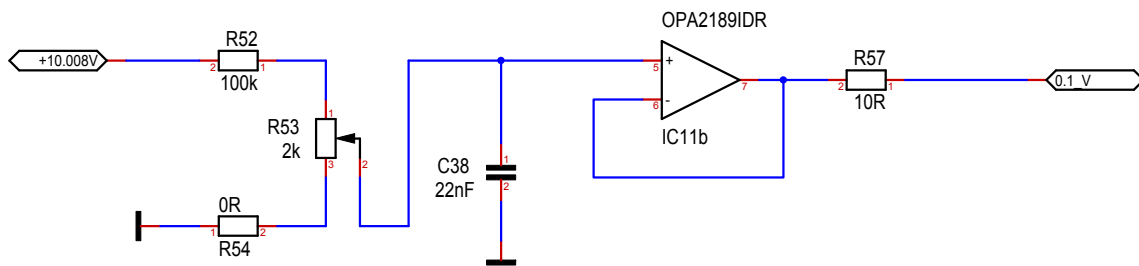
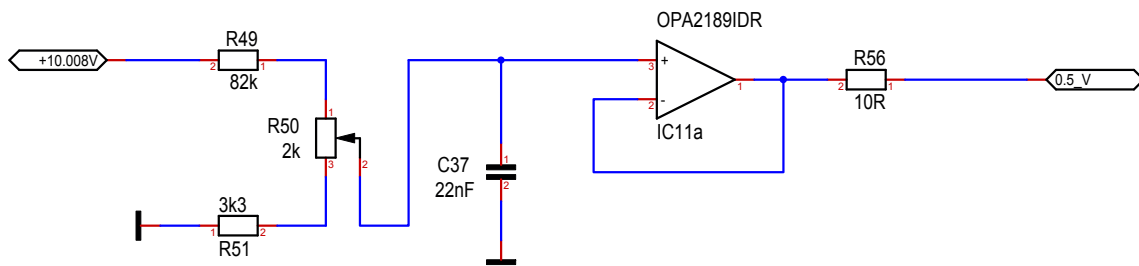
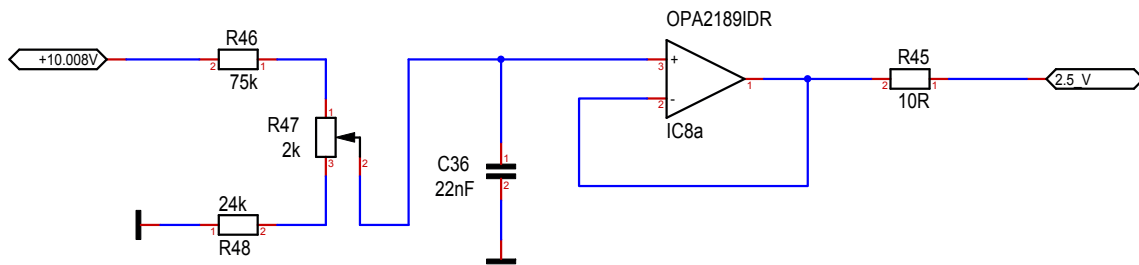


Massstab	101.39%	Alexander C. Frank	Blatt : Arduino
Änderung	04.02.2020 18:09	ETH QUANTUMOPTICS	
Ausgabe	04.02.2020 18:46		
Datei	ReferenceMod.T3001		



FOR LITHIUM TEAM ONLY

Massstab	101.39%	Alexander C. Frank	Blatt :Derivate
Änderung	04.02.2020	18:09	ETH QUANTUMOPTICS
Ausgabe	04.02.2020	18:46	
Datei	ReferenceMod.T3001		



Massstab	101.39%	Alexander C. Frank	Blatt :Derivate2
Änderung	04.02.2020 18:09		ETH QUANTUMOPTICS
Ausgabe	04.02.2020 18:46		
Datei	ReferenceMod.T3001		