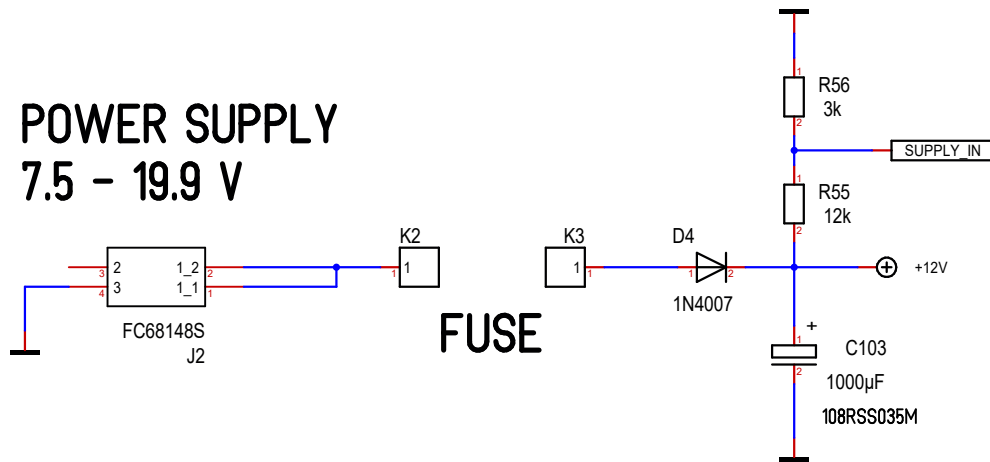
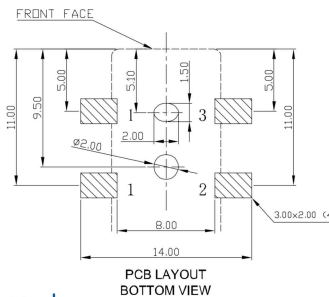
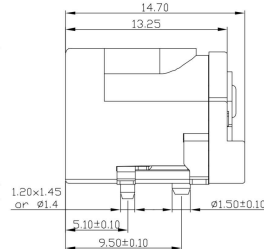
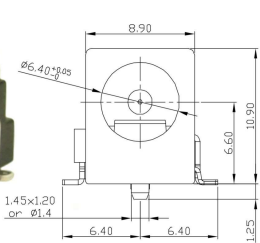
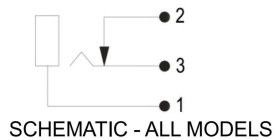


POWER SUPPLY 7.5 - 19.9 V



DC-10AS 2.1mm Pin
DC-10BS 2.5mm Pin

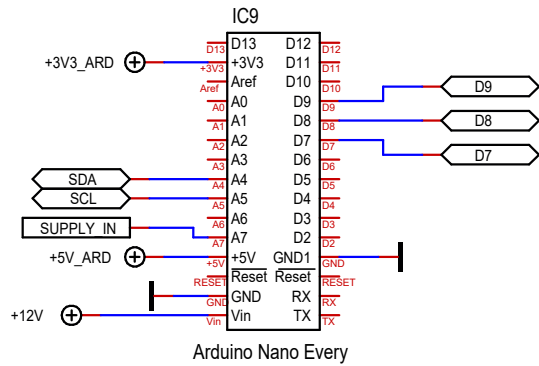
Part No. FC68148S
Part No. FC68149S
Add Suffix 'T' for taped.



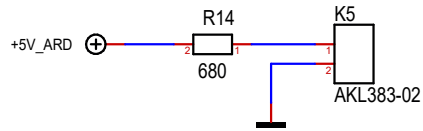
For further information, contact sales@cliffuk.co.uk

Chip	ATMEGA4809			
Clock	20 MHz			
Memory	48 KB FLASH	6 KB SRAM		
Interfaces	USB	SPI	I2C	UART
Voltages	5V INPUT-USB	6-21V INPUT-VIN	5V OPERATING	
Pinout	14 DIGITAL	6 PWM	8 ANALOG	
Dimensions	18 x 45 mm			

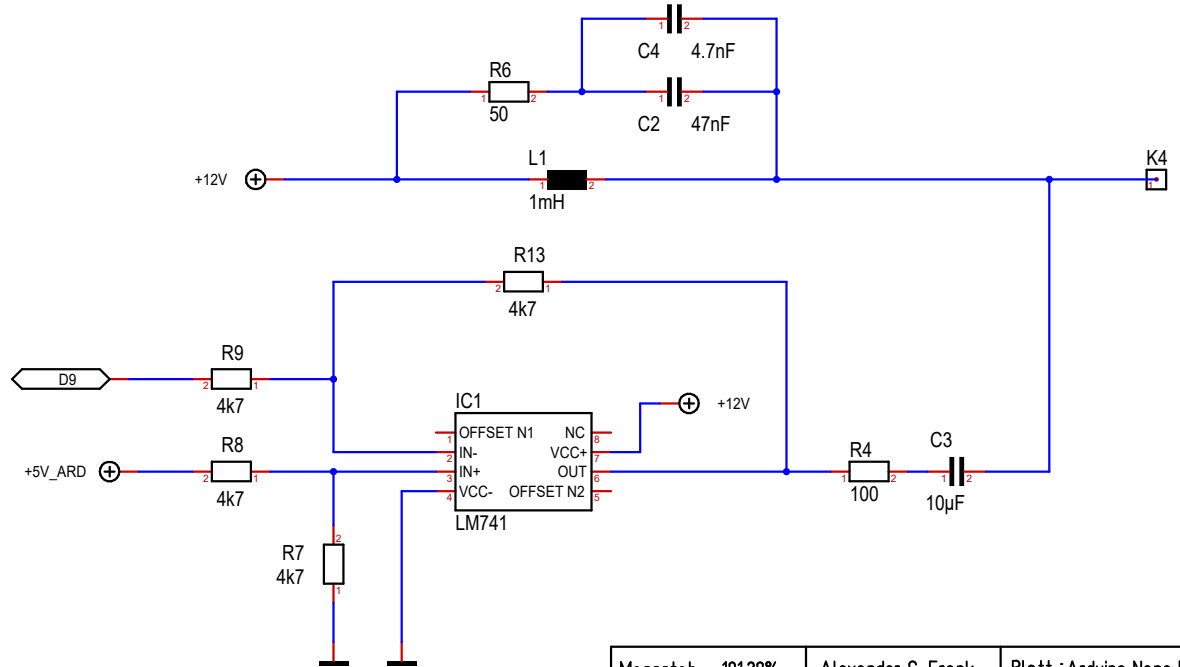
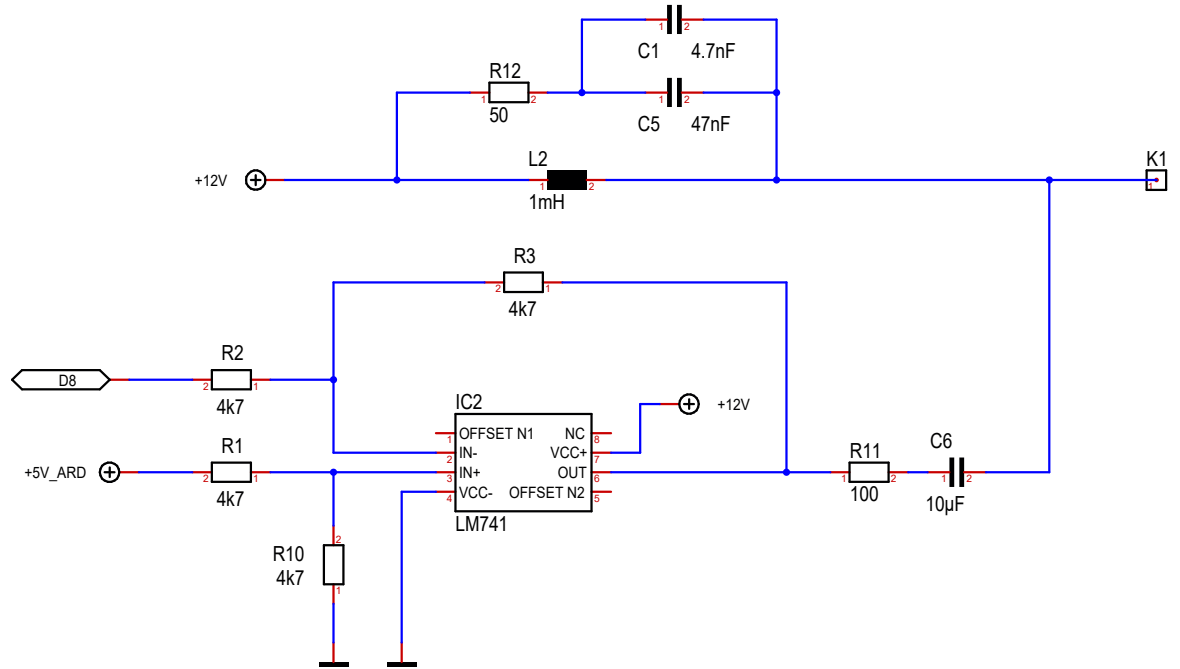
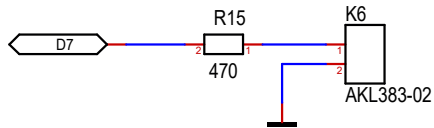
Massstab	101.39%	Alexander C. Frank	Blatt : Power Inlet
Änderung	09.09.2021 05:32	ETH QUANTUMOPTICS	
Ausgabe	09.09.2021 06:34		
Datei	Rotormod-TX-1.T3001		



POWER LED



BUSY LED



Massstab	101.39%	Alexander C. Frank	Blatt : Arduino Nano Every
Änderung	09.09.2021 05:32	ETH QUANTUMOPTICS	
Ausgabe	09.09.2021 06:34		
Datei	Rotormod-TX-1.T3001		