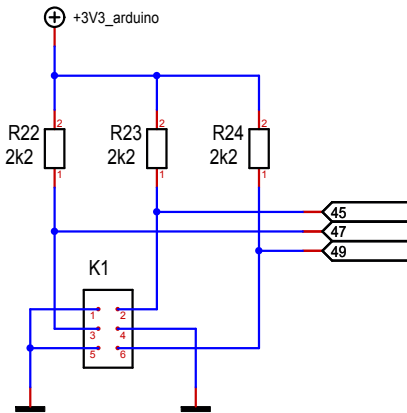


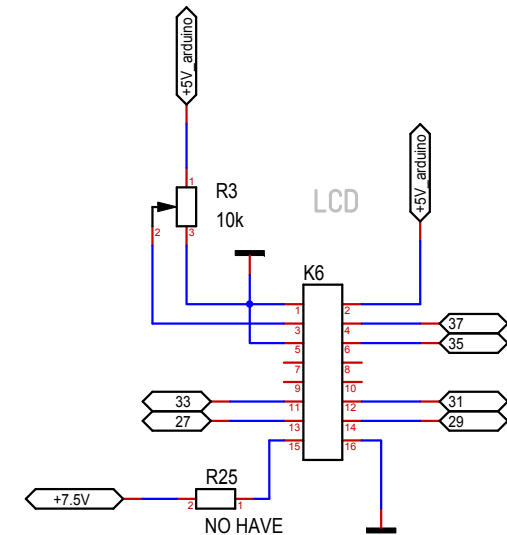
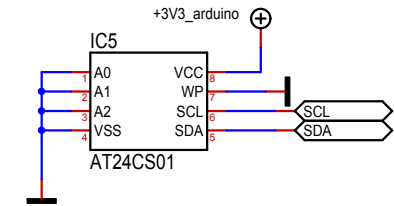
KEYBOARD



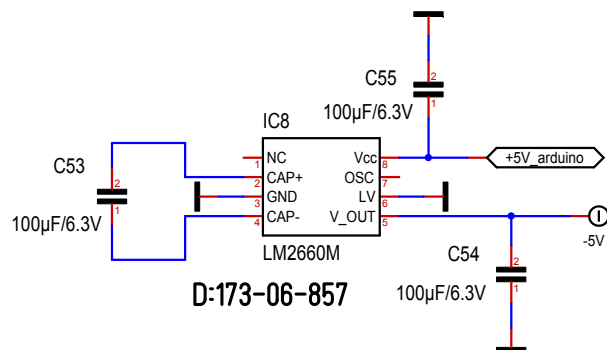
ROTARY ENCODER WITH SWITCH

MAYBE THIS ONE :

<http://www.changpuak.ch/electronics/ROTARY-ENCODER.php>



MC41605B6W-SPTLY
LiquidCrystal lcd(7,6,2,5,3,A0);
LED: Pin 15,16



Massstab	101.39%	Alexander C. Frank	Blatt : Arduino DUE
Änderung	27.05.2019	16:45	ETH QUANTUMOPTICS
Ausgabe	27.05.2019	19:18	
Datei	Supermod-V2.T3001		

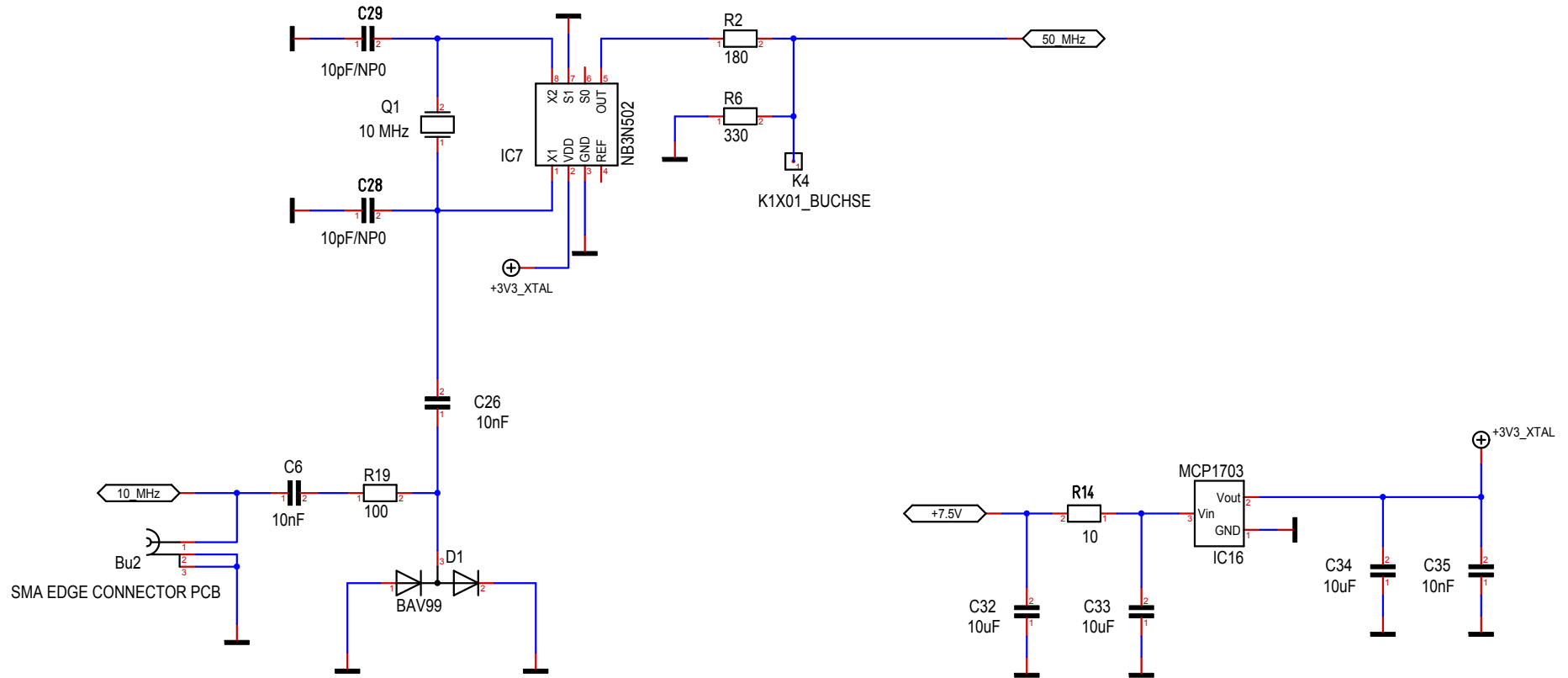


Table 1. CLOCK MULTIPLIER SELECT TABLE

S1*	S0**	Multiplier
L	L	2X
L	H	5X
M	L	3X
M	H	3.33X
H	L	4X
H	H	2.5X

L = GND

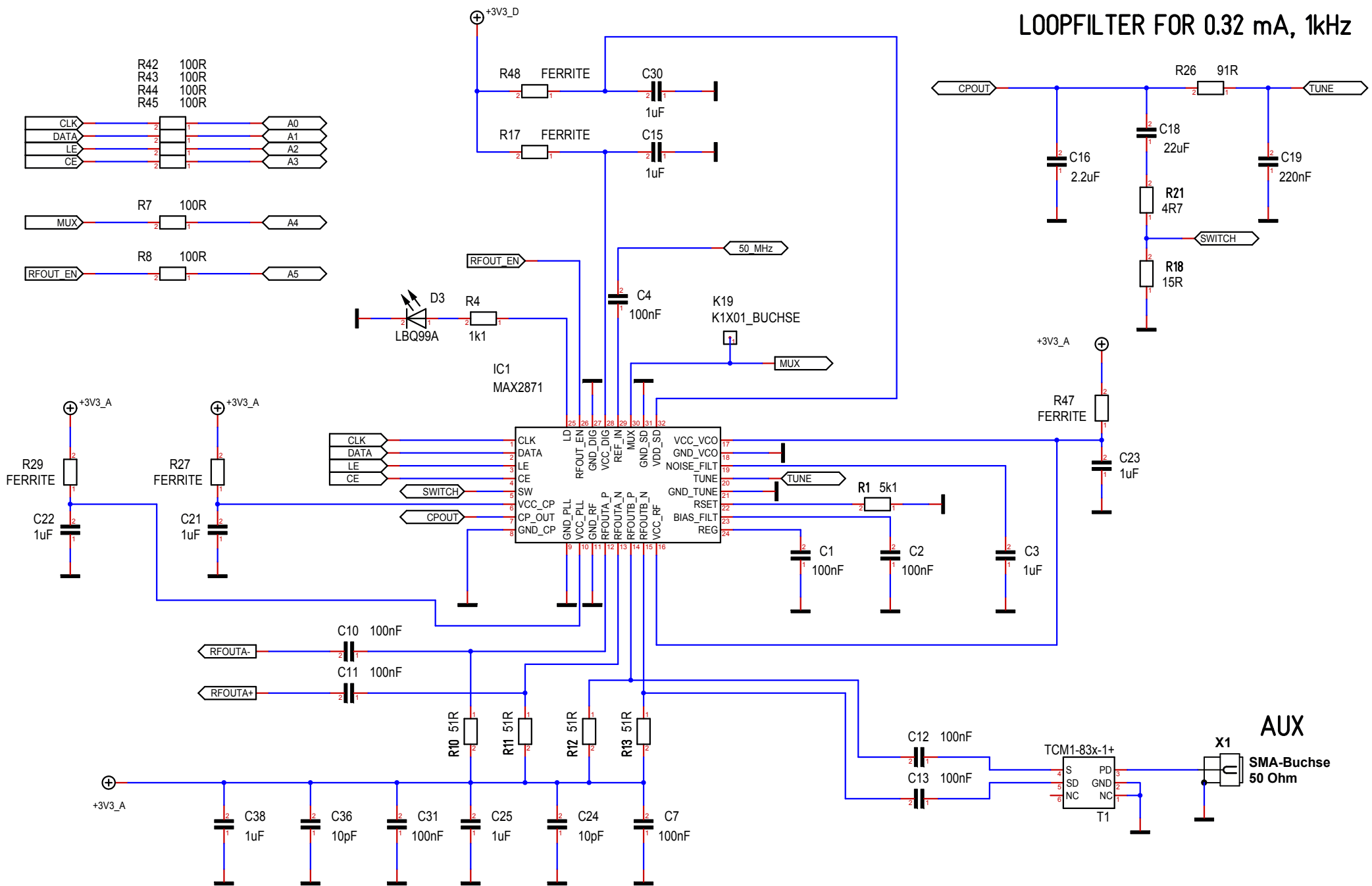
H = V_{DD}

M = OPEN (unconnected)

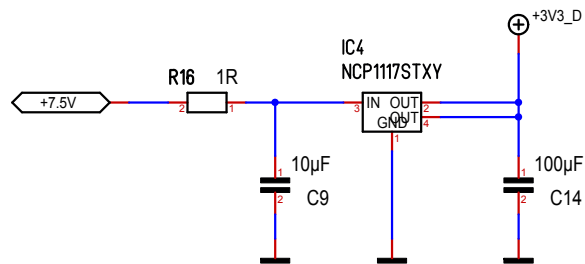
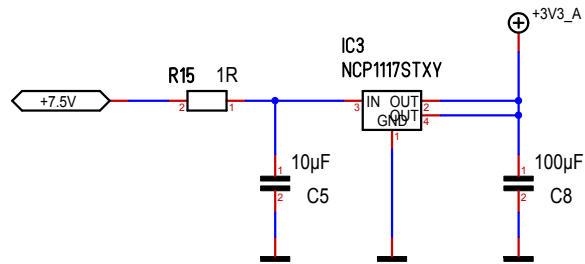
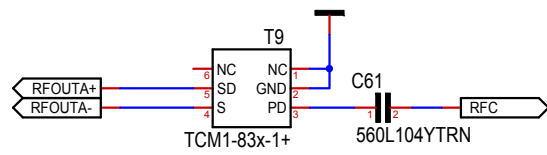
* Pin S1 defaults to M when left open

** Pin S0 defaults to H when left open

Massstab	101.39%	Alexander C. Frank	Blatt :Referenz
Änderung	27.05.2019	16:45	ETH QUANTUMOPTICS
Ausgabe	27.05.2019	19:18	
Datei	Supermod-V2.T3001		

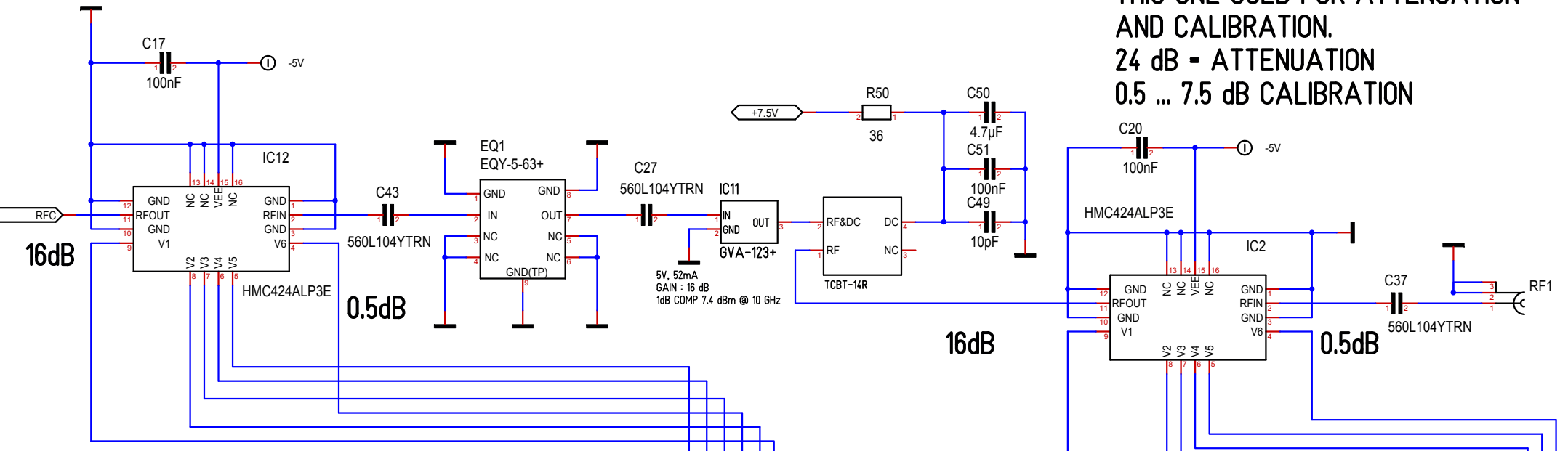


Massstab	101.39%	Alexander C. Frank	Blatt :MAX2870
Änderung	27.05.2019	16:45	ETH QUANTUMOPTICS
Ausgabe	27.05.2019	19:18	
Datei	Supermod-V2.T3001		

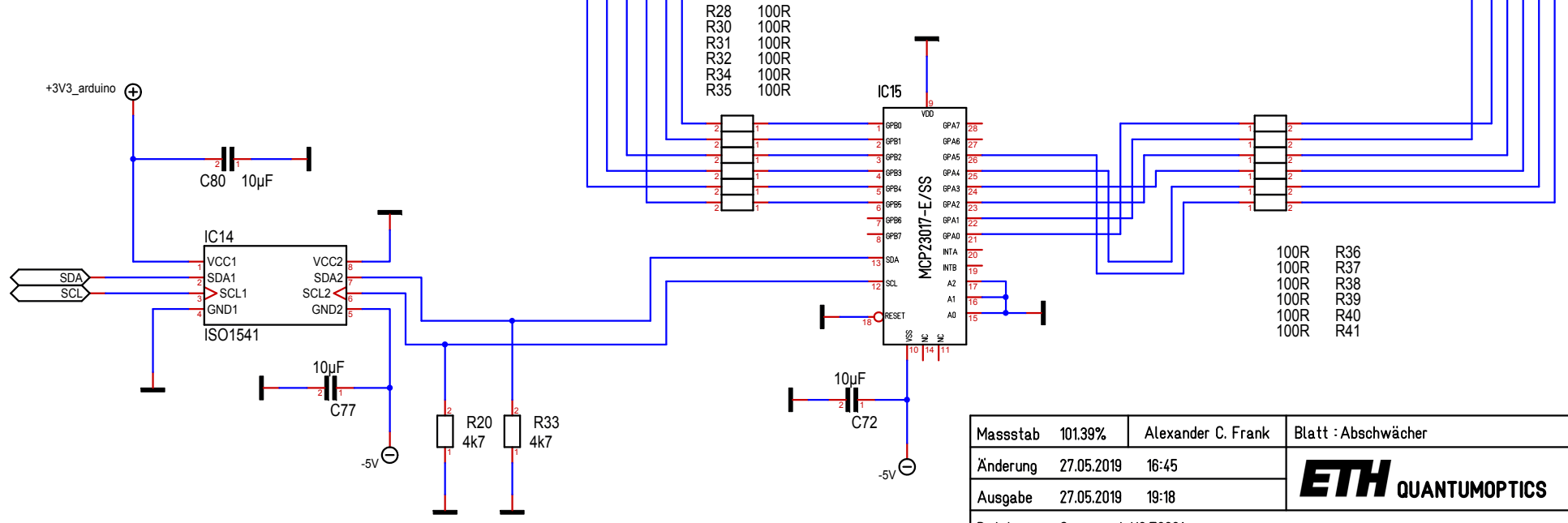


Massstab	101.39%	Alexander C. Frank	Blatt : RFswitch
Änderung	27.05.2019	16:45	ETH QUANTUMOPTICS
Ausgabe	27.05.2019	19:18	
Datei	Supermod-V2.T3001		

THIS ONE USED FOR ATTENUATION
AND CALIBRATION.
24 dB = ATTENUATION
0.5 ... 7.5 dB CALIBRATION



THIS ONE USED FOR ATTENUATION



Massstab	101.39%	Alexander C. Frank	Blatt : Abschwächer
Änderung	27.05.2019	16:45	ETH QUANTUMOPTICS
Ausgabe	27.05.2019	19:18	
Datei	Supermod-V2.T3001		