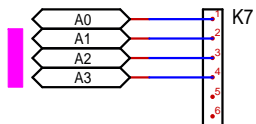
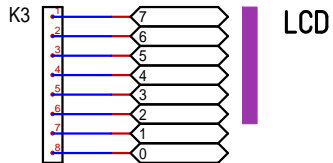


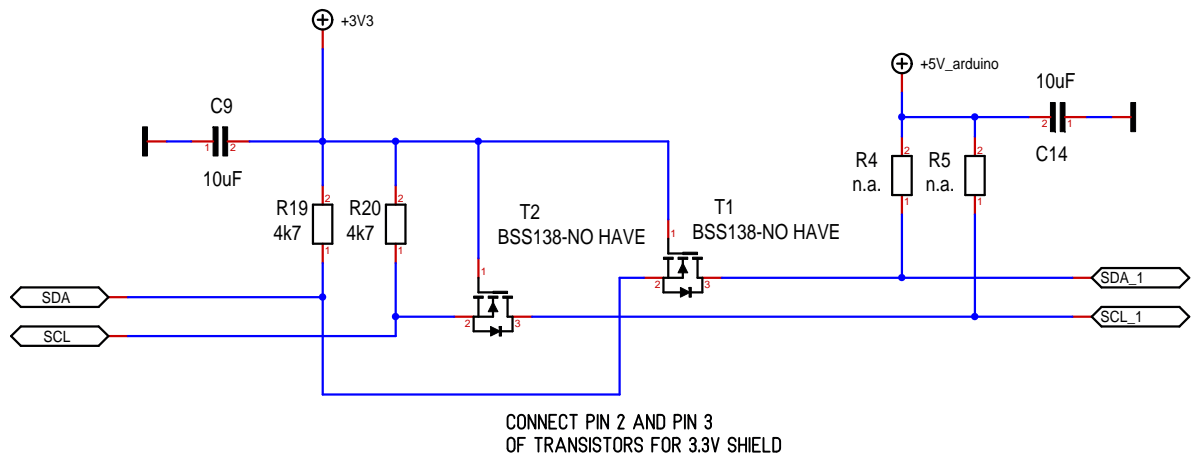
Attenuator



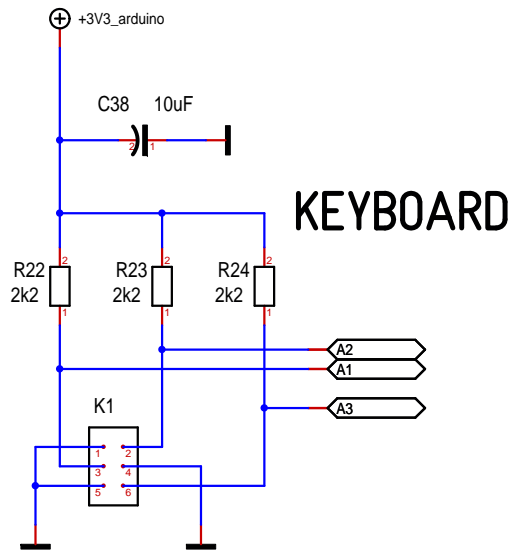
Rotary Encoder



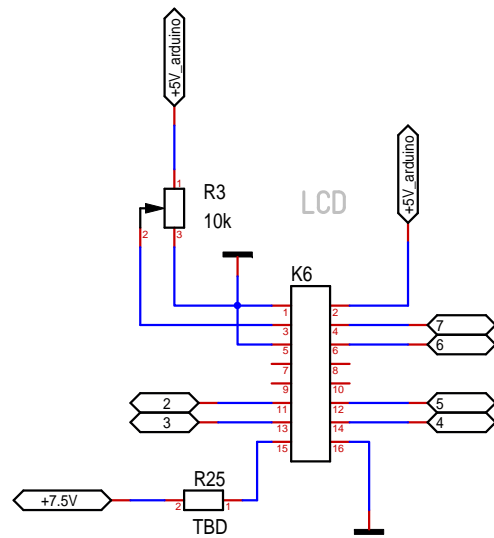
LCD



CONNECT PIN 2 AND PIN 3 OF TRANSISTORS FOR 3.3V SHIELD



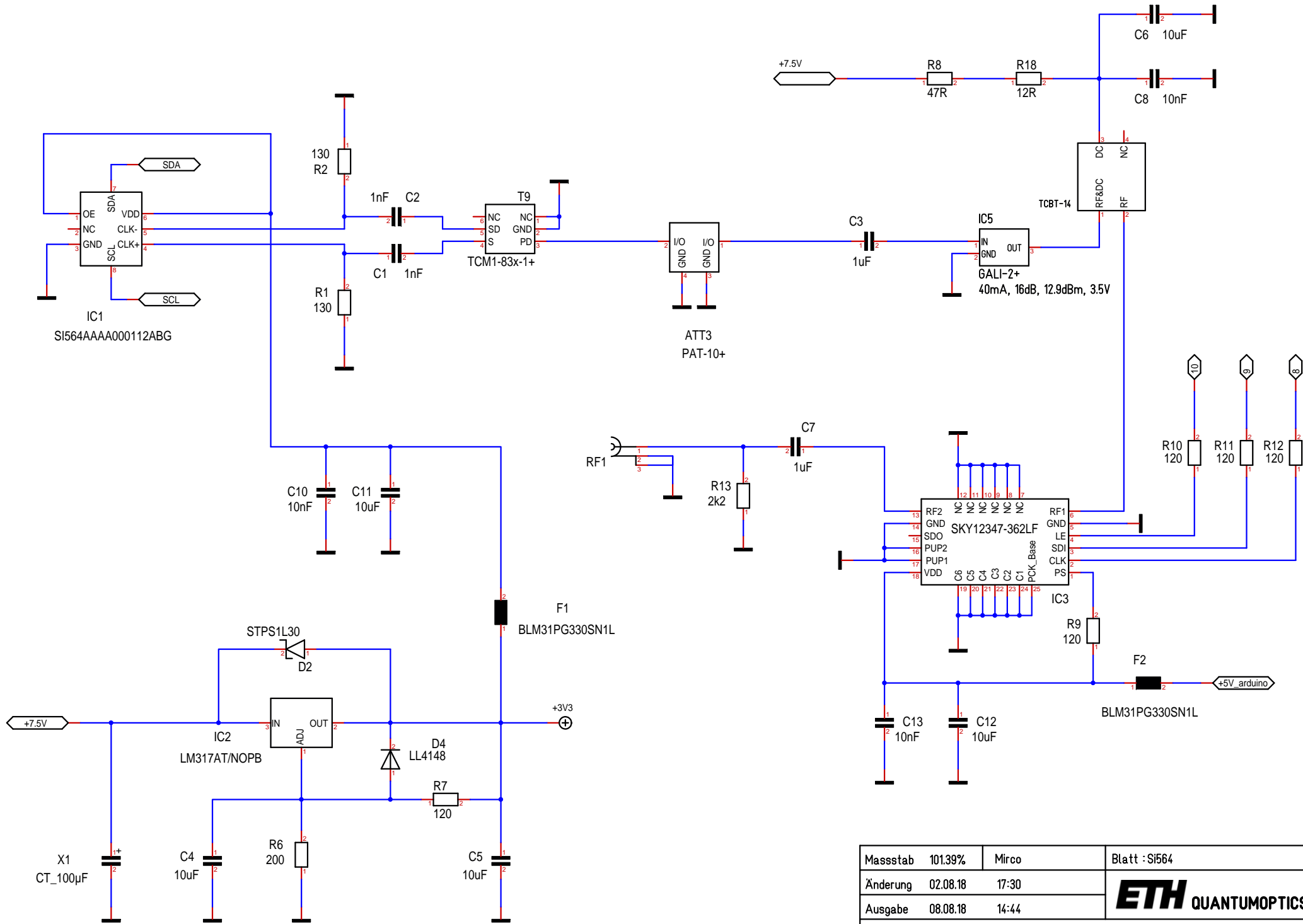
KEYBOARD



MC41605B6W-SPTLY
LiquidCrystal lcd(7,6,2,5,3,A0);
LED: Pin 15,16

ROTARY ENCODER WITH SWITCH
MAYBE THIS ONE :
<http://www.changpuak.ch/electronics/ROTARY-ENCODER.php>

Massstab	101.39%	Mirco	Blatt : Arduino UNO
Änderung	02.08.18	17:30	ETH QUANTUMOPTICS
Ausgabe	08.08.18	14:44	
Datei	Ultramod-1.T3001		



Masstab	101.39%	Mirco	Blatt : SI564
Änderung	02.08.18	17:30	ETH QUANTUMOPTICS
Ausgabe	08.08.18	14:44	
Datei	Ultramod-1.T3001		