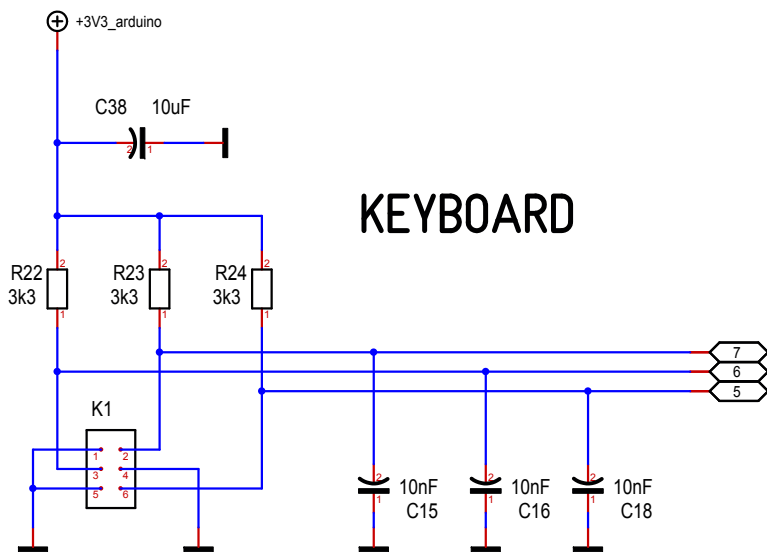
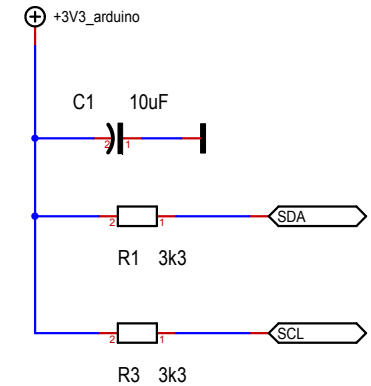
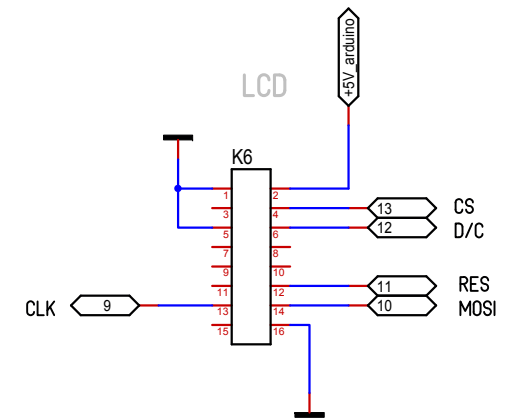


LCD

ROTARY ENCODER



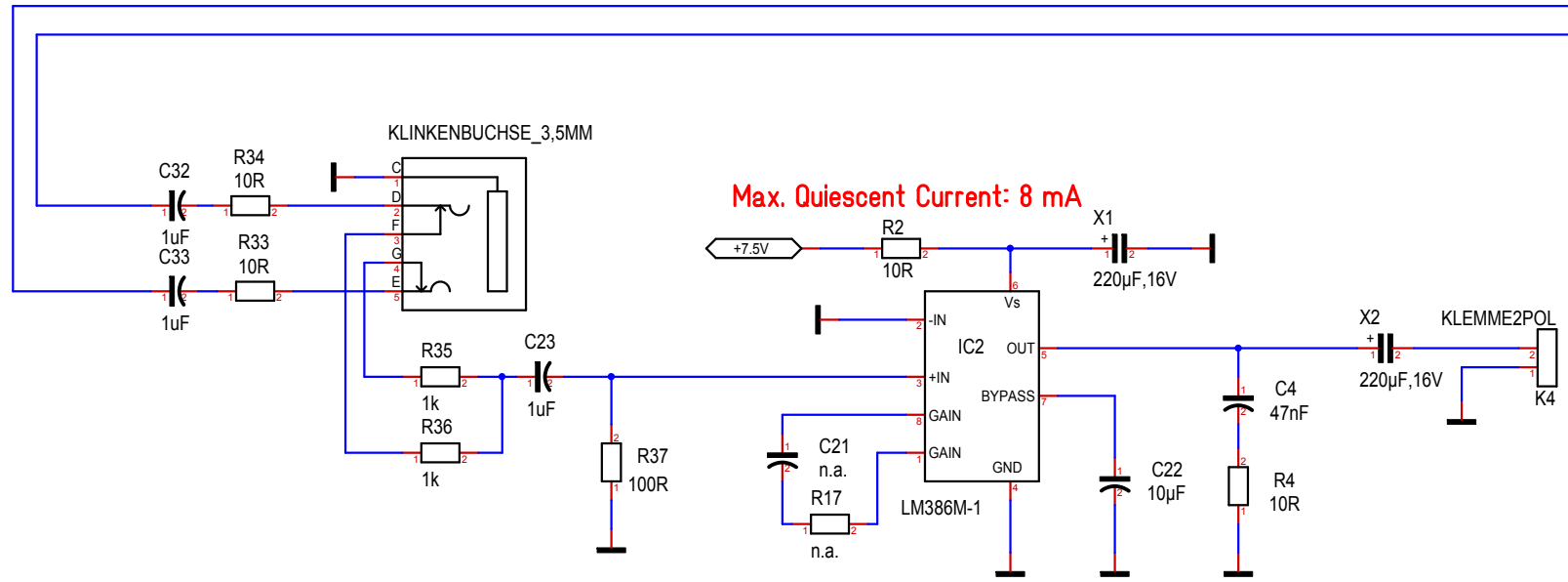
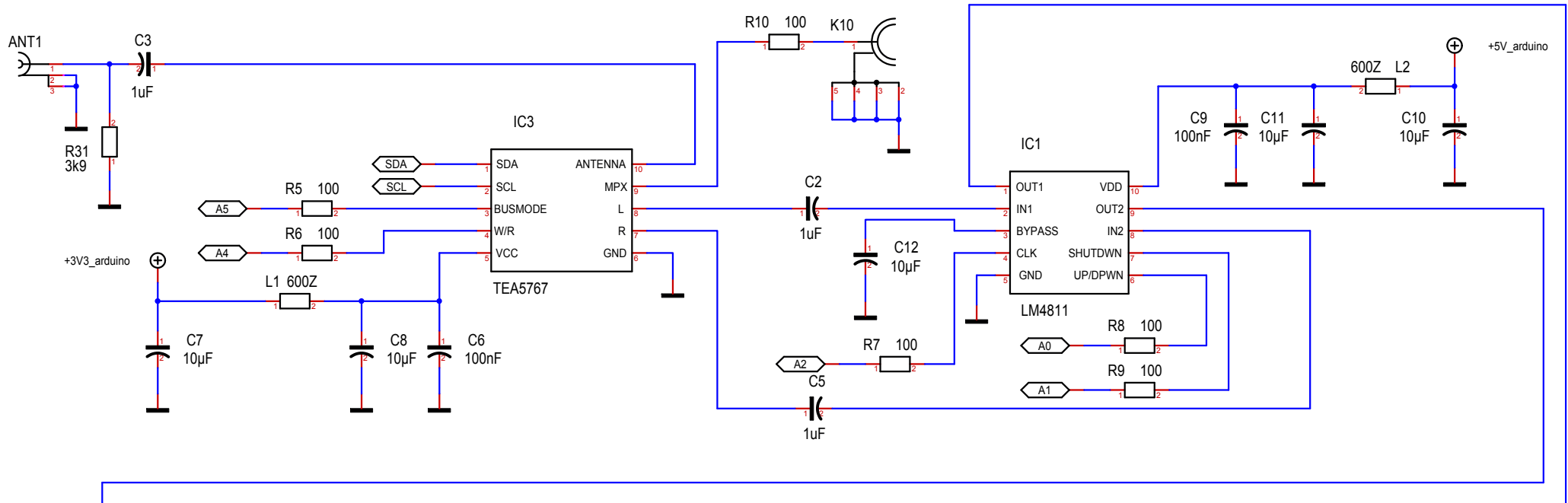
# KEYBOARD



MC41605B6W-SPTLY  
LiquidCrystal lcd(7,6,2,5,3,A0);  
LED: Pin 15,16

ROTARY ENCODER WITH SWITCH  
MAYBE THIS ONE :  
<http://www.changpuak.ch/electronics/ROTARY-ENCODER.php>

Massstab	101.39%	Alexander C. Frank	Blatt : Arduino DUE
Änderung	09.10.2019	12:43	<b>ETH</b> QUANTUMOPTICS
Ausgabe	10.10.2019	12:42	
Datei	Wacharamod_3.T3001		



Max. Quiescent Current: 8 mA

The I2C-bus mode is selected when pin BUSMODE is LOW,

Massstab	101.39%	Alexander C. Frank	Blatt : TEA5767
Änderung	09.10.2019	12:43	<b>ETH</b> QUANTUMOPTICS
Ausgabe	10.10.2019	12:42	
Datei	Wacharamod_3.T3001		